

# RC3H1 Polyclonal antibody

Catalog Number: 31234-1-AP

## Basic Information

**Catalog Number:**

31234-1-AP

**Source:**

Rabbit

**Isotype:**

IgG

**Immunogen Catalog Number:**

AG35089

**GenBank Accession Number:**

NM\_001300850

**GeneID (NCBI):**

149041

**UNIPROT ID:**

Q5TC82

**Full Name:**

ring finger and CCCH-type zinc finger domains 1

**Calculated MW:**

126 kDa

**Observed MW:**

130-150 kDa

**Purification Method:**

Antigen affinity Purification

**Recommended Dilutions:**

WB: 1:2000-1:10000

IHC: 1:500-1:2000

IF/ICC: 1:200-1:800

## Applications

**Tested Applications:**

WB, IHC, IF/ICC, ELISA

**Species Specificity:**

human, mouse

**Note-IHC: suggested antigen retrieval with TE buffer pH 9.0; (\*) Alternatively, antigen retrieval may be performed with citrate buffer pH 6.0**

**Positive Controls:**

WB: 4T1 cells, HEK-293T cells, HeLa cells

IHC: human ovary cancer tissue, mouse pancreas tissue

IF/ICC: HeLa cells,

## Background Information

Roquin-1 (Rc3h1) is an E3 ubiquitin ligase originally discovered in a mutational screen for genetic factors contributory to systemic lupus erythematosus-like symptoms in mice. A single base pair mutation in the Rc3h1 gene resulted in the manifestation of autoantibody production and sustained immunological inflammation characterized by excessive T follicular helper cell activation and formation of germinal centers. (PMID: 26673963)

## Storage

**Storage:**

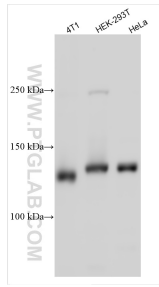
Store at -20°C. Stable for one year after shipment.

**Storage Buffer:**

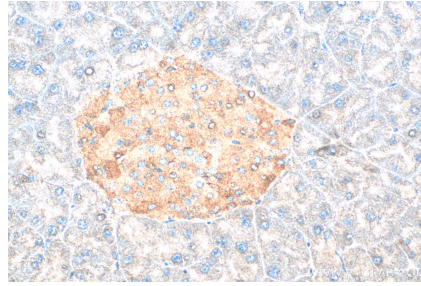
PBS with 0.02% sodium azide and 50% glycerol, pH7.3

Aliquoting is unnecessary for -20°C storage

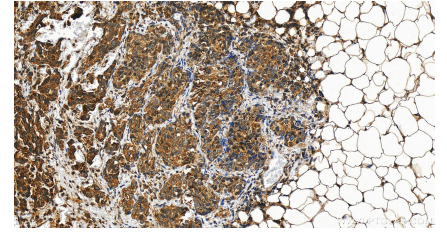
## Selected Validation Data



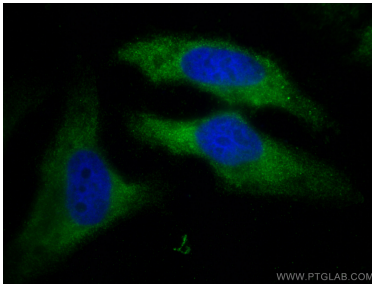
Various lysates were subjected to SDS PAGE followed by western blot with 31234-1-AP (RC3H1 antibody) at dilution of 1:5000 incubated at room temperature for 1.5 hours.



Immunohistochemical analysis of paraffin-embedded mouse pancreas tissue slide using 31234-1-AP (RC3H1 antibody) at dilution of 1:1000 (under 40x lens). Heat mediated antigen retrieval with Tris-EDTA buffer (pH 9.0).



Immunohistochemical analysis of paraffin-embedded human ovary cancer tissue slide using 31234-1-AP (RC3H1 antibody) at dilution of 1:1000 (under 20x lens). Heat mediated antigen retrieval with Tris-EDTA buffer (pH 9.0).



Immunofluorescent analysis of (-20°C Ethanol) fixed HeLa cells using RC3H1 antibody (31234-1-AP) at dilution of 1:400 and Multi-rAb CoraLite® Plus 488-Goat Anti-Rabbit Recombinant Secondary Antibody (H+L) (RGAR002).