

For Research Use Only

CCDC85C Polyclonal antibody

Catalog Number: 31200-1-AP



Basic Information

Catalog Number: 31200-1-AP	GenBank Accession Number: NM_001144995	Purification Method: Antigen affinity Purification
Concentration: 450 µg/ml	GeneID (NCBI): 317762	Recommended Dilutions: WB: 1:2000-1:16000
Source: Rabbit	UNIPROT ID: A6NKD9	
Isotype: IgG	Full Name: coiled-coil domain containing 85C	
Immunogen Catalog Number: AG35157	Calculated MW: 419 aa, 45 kDa	
	Observed MW: 45-50 kDa	

Applications

Tested Applications: WB, ELISA	Positive Controls: WB : HCT 116 cells, MCF-7 cells, MDA-MB-231 cells
Species Specificity: human	

Background Information

Ccdc85c (coiled-coil domain containing 85c) is a gene encoding protein, which is located on human chromosome 14 (14q32.2) and belongs to the helical loop domain protein family. The protein is mainly expressed in the neuroepithelial cells of the lateral ventricle wall of the brain, especially at the top junction of radial glial cells. In addition, it is also expressed in a variety of monolayer epithelial cells, but not in stratified epithelial cells. CCDC85C is the pathogenic gene of hereditary hydrocephalus and subcortical endometriosis (often accompanied by cerebral hemorrhage). In CCDC85C gene knockout (KO) mice and rats, abnormal development of ventricular system was observed, resulting in hydrocephalus and cerebral hemorrhage (PMID: 37271245).

Storage

Storage:
Store at -20°C. Stable for one year after shipment.
Storage Buffer:
PBS with 0.02% sodium azide and 50% glycerol, pH7.3
Aliquoting is unnecessary for -20°C storage

For technical support and original validation data for this product please contact:

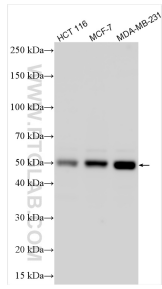
T: 4006900926

E: Proteintech-CN@ptglab.com

W: ptgcn.com

This product is exclusively available under Proteintech Group brand and is not available to purchase from any other manufacturer.

Selected Validation Data



Various lysates were subjected to SDS PAGE followed by western blot with 31200-1-AP (CCDC85C antibody) at dilution of 1:8000 incubated at room temperature for 1.5 hours.