

For Research Use Only

# Keap1 Polyclonal antibody

Catalog Number: 31197-1-AP



## Basic Information

<b>Catalog Number:</b> 31197-1-AP	<b>GenBank Accession Number:</b> NM_001110305	<b>Purification Method:</b> Antigen affinity Purification
<b>Concentration:</b> 400 µg/ml	<b>GeneID (NCBI):</b> 50868	<b>Recommended Dilutions:</b> WB 1:2000-1:12000
<b>Source:</b> Rabbit	<b>UNIPROT ID:</b> Q9Z2X8	
<b>Isotype:</b> IgG	<b>Full Name:</b> kelch-like ECH-associated protein 1	
<b>Immunogen Catalog Number:</b> AG35035	<b>Calculated MW:</b> 70 kDa	
	<b>Observed MW:</b> 60-64 kDa	

## Applications

<b>Tested Applications:</b> WB, ELISA	<b>Positive Controls:</b> WB : C2C12 cells,
<b>Species Specificity:</b> mouse, rat	

## Background Information

KEAP1 (Kelch-like ECH-associated protein 1) is a critical regulatory protein that plays a pivotal role in the cellular response to oxidative stress. It is best known for its function as a negative regulator of the Nrf2 (NF-E2-related factor 2) pathway, which is essential for maintaining cellular redox homeostasis.

## Storage

**Storage:**  
Store at -20°C. Stable for one year after shipment.  
**Storage Buffer:**  
PBS with 0.02% sodium azide and 50% glycerol, pH7.3  
Aliquoting is unnecessary for -20°C storage

For technical support and original validation data for this product please contact:

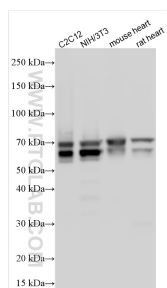
T: 4006900926

E: [Proteintech-CN@ptglab.com](mailto:Proteintech-CN@ptglab.com)

W: [ptgcn.com](http://ptgcn.com)

This product is exclusively available under Proteintech Group brand and is not available to purchase from any other manufacturer.

## Selected Validation Data



Various lysates were subjected to SDS PAGE followed by western blot with 31197-1-AP (Keap1 antibody) at dilution of 1:6000 incubated at room temperature for 1.5 hours.