

For Research Use Only

SLC2A7 Polyclonal antibody, PBS Only

Catalog Number: 31182-1-PBS



Basic Information

Catalog Number:

31182-1-PBS

Concentration:

1 mg/ml

Source:

Rabbit

Isotype:

IgG

Immunogen Catalog Number:

AG34515

GenBank Accession Number:

NM_207420

GeneID (NCBI):

155184

UNIPROT ID:

Q6PXP3

Full Name:

solute carrier family 2 (facilitated glucose transporter), member 7

Calculated MW:

512 aa, 56 kDa

Purification Method:

Antigen affinity Purification

Applications

Tested Applications:

IHC, Indirect ELISA

Species Specificity:

human, mouse

Background Information

SLC2A7 (solute carrier family 2 member 7, also known as GLUT7) belongs to a family of transporters that catalyze the uptake of sugars through facilitated diffusion.

Storage

Storage:

Store at -80°C.

The product is shipped with ice packs. Upon receipt, store it immediately at -80°C

Storage Buffer:

PBS Only

For technical support and original validation data for this product please contact:

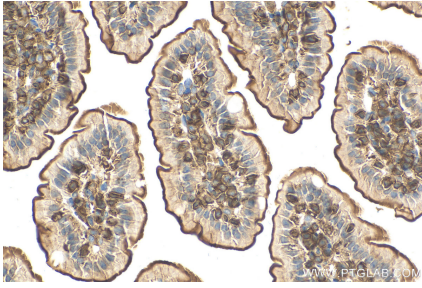
T: 4006900926

E: Proteintech-CN@ptglab.com

W: ptgcn.com

This product is exclusively available under Proteintech Group brand and is not available to purchase from any other manufacturer.

Selected Validation Data



Immunohistochemical analysis of paraffin-embedded mouse small intestine tissue slide using 31182-1-AP (SLC2A7 antibody) at dilution of 1:200 (under 40x lens). Heat mediated antigen retrieval with Tris-EDTA buffer (pH 9.0). This data was developed using the same antibody clone with 31182-1-PBS in a different storage buffer formulation.