

For Research Use Only

METTL8 Polyclonal antibody, PBS Only

Catalog Number: 31173-1-PBS



Basic Information

Catalog Number:

31173-1-PBS

Concentration:

1 mg/ml

Source:

Rabbit

Isotype:

IgG

Immunogen Catalog Number:

AG34222

GenBank Accession Number:

BC025250

GeneID (NCBI):

79828

UNIPROT ID:

Q9H825

Full Name:

methyltransferase like 8

Calculated MW:

33 kDa

Observed MW:

33-40 kDa

Purification Method:

Antigen affinity Purification

Applications

Tested Applications:

WB, IF/ICC, Indirect ELISA

Species Specificity:

human

Background Information

METTL8 (methyltransferase-like protein 8) is an m3C methyltransferase that is best known for its mitochondrial role in installing m3C32 on mt-tRNAThr/Ser(UCN). METTL8 has proved to be a transcriptional target of STAT3 that mediates STAT3's functions in mESCs (PMID: 29706498). METTL8 has multiple splicing isoforms and can undergo sumoylation and associate with nuclear RNA-binding proteins to regulate R-loop formation on ribosomal DNA gene (presumably via its methyltransferase activity on m3C) (PMID: 38744809).

Storage

Storage:

Store at -80°C.

The product is shipped with ice packs. Upon receipt, store it immediately at -80°C

Storage Buffer:

PBS only, pH7.3

For technical support and original validation data for this product please contact:

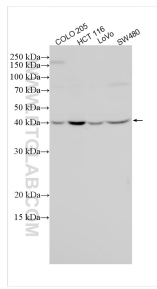
T: 4006900926

E: Proteintech-CN@ptglab.com

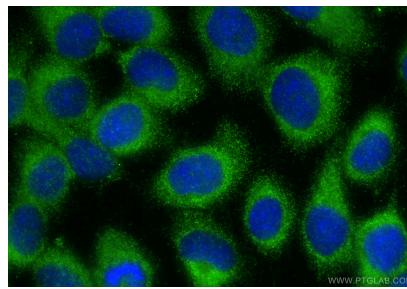
W: ptgcn.com

This product is exclusively available under Proteintech Group brand and is not available to purchase from any other manufacturer.

Selected Validation Data



Various lysates were subjected to SDS PAGE followed by western blot with 31173-1-AP (METTL8 antibody) at dilution of 1:1500 incubated at room temperature for 1.5 hours. This data was developed using the same antibody clone with 31173-1-PBS in a different storage buffer formulation.



Immunofluorescent analysis of (-20°C Methanol) fixed A431 cells using METTL8 antibody (31173-1-AP) at dilution of 1:400 and CoraLite® 488-Conjugated Goat Anti-Rabbit IgG(H+L) (SA00013-2). This data was developed using the same antibody clone with 31173-1-PBS in a different storage buffer formulation.