

For Research Use Only

# METTL8 Polyclonal antibody

Catalog Number: 31173-1-AP



## Basic Information

Catalog Number:

31173-1-AP

Concentration:

600 ug/ml

Source:

Rabbit

Isotype:

IgG

Immunogen Catalog Number:

AG34222

GenBank Accession Number:

BC025250

GeneID (NCBI):

79828

UNIPROT ID:

Q9H825

Full Name:

methyltransferase like 8

Calculated MW:

33 kDa

Observed MW:

33~40 kDa

Purification Method:

Antigen affinity Purification

Recommended Dilutions:

WB 1:500-1:3000

IF/ICC 1:200-1:800

## Applications

Tested Applications:

WB, IF/ICC, ELISA

Species Specificity:

human

Positive Controls:

WB : COLO 205 cells, HCT 116 cells, LoVo cells, SW480 cells

IF/ICC : A431 cells,

## Background Information

METTL8 (methyltransferase-like protein 8) is an m3C methyltransferase that is best known for its mitochondrial role in installing m3C32 on mt-tRNAThr/Ser(UCN). METTL8 has proved to be a transcriptional target of STAT3 that mediates STAT3's functions in mESCs (PMID: 29706498). METTL8 has multiple splicing isoforms and can undergo sumoylation and associate with nuclear RNA-binding proteins to regulate R-loop formation on ribosomal DNA gene (presumably via its methyltransferase activity on m3C) (PMID: 38744809).

## Storage

Storage:

Store at -20°C. Stable for one year after shipment.

Storage Buffer:

PBS with 0.02% sodium azide and 50% glycerol, pH7.3

Aliquoting is unnecessary for -20°C storage

For technical support and original validation data for this product please contact:

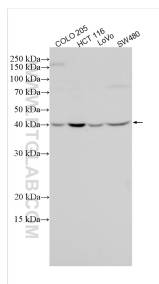
T: 4006900926

E: [Proteintech-CN@ptglab.com](mailto:Proteintech-CN@ptglab.com)

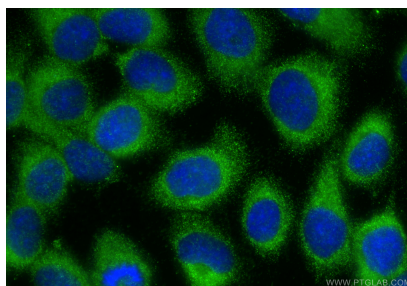
W: [ptgcn.com](http://ptgcn.com)

This product is exclusively available under Proteintech Group brand and is not available to purchase from any other manufacturer.

## Selected Validation Data



Various lysates were subjected to SDS PAGE followed by western blot with 31173-1-AP (METTL8 antibody) at dilution of 1:1500 incubated at room temperature for 1.5 hours.



Immunofluorescent analysis of (-20°C Methanol) fixed A431 cells using METTL8 antibody (31173-1-AP) at dilution of 1:400 and CoraLite® 488-Conjugated Goat Anti-Rabbit IgG(H+L) (SA00013-2).