

For Research Use Only

OLFML1 Polyclonal antibody

Catalog Number: 31165-1-AP



Basic Information

Catalog Number:

31165-1-AP

Size:

550 ug/ml

Source:

Rabbit

Isotype:

IgG

Immunogen Catalog Number:

AG35125

GenBank Accession Number:

BC092488

GeneID (NCBI):

283298

UNIPROT ID:

Q6UWY5

Full Name:

olfactomedin-like 1

Calculated MW:

402 aa, 46 kDa

Observed MW:

60 kDa

Purification Method:

Antigen affinity Purification

Recommended Dilutions:

WB 1:2000-1:16000

Applications

Tested Applications:

WB, ELISA

Species Specificity:

human, mouse, rat

Positive Controls:

WB : HuH-7 cells, U-251 cells, mouse testis tissue, rat testis tissue

Background Information

OLFML1 (Olfactomedin-like protein 1) is a novel member of human OLF protein family with an olfactamine domain (143-397 aa) in its C-terminus. OLFML1 exhibits the promotion of cell proliferation, along with the increase of percentage of S phase cells. OLFML1 is considered a secreted glycoprotein that enhances cell cycle progression in human cancer cell lines in vitro (PMID: 30266405). OLFML1 contains three potential N-glycosylation sites (residues 66, 138 and 183) and could be modified by the N-glycosylation (PMID: 18708057).

Storage

Storage:

Store at -20°C. Stable for one year after shipment.

Storage Buffer:

PBS with 0.02% sodium azide and 50% glycerol pH 7.3.

Aliquoting is unnecessary for -20°C storage

For technical support and original validation data for this product please contact:

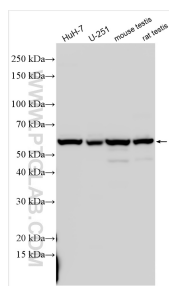
T: 4006900926

E: Proteintech-CN@ptglab.com

W: ptgcn.com

This product is exclusively available under Proteintech Group brand and is not available to purchase from any other manufacturer.

Selected Validation Data



Various lysates were subjected to SDS PAGE followed by western blot with 31165-1-AP (OLFML1 antibody) at dilution of 1:8000 incubated at room temperature for 1.5 hours.