

For Research Use Only

# C18orf24 Polyclonal antibody

Catalog Number: 31161-1-AP



## Basic Information

Catalog Number:

31161-1-AP

Size:

550 µg/ml

Source:

Rabbit

Isotype:

IgG

Immunogen Catalog Number:

AG34772

GenBank Accession Number:

BC015706

GeneID (NCBI):

220134

UNIPROT ID:

Q96BD8

Full Name:

chromosome 18 open reading frame

24

Observed MW:

32 kDa

Purification Method:

Antigen affinity Purification

Recommended Dilutions:

WB 1:1000-1:4000

## Applications

Tested Applications:

WB, ELISA

Species Specificity:

Human, mouse, rat

Positive Controls:

WB : HeLa cells, HuH-7 cells, U2OS cells, mouse pancreas tissue, rat pancreas tissue

## Background Information

C18orf24 (Spindle and kinetochore-associated protein 1, SKA1) is involved in chromosome congression and mitosis. It is upregulated and oncogenic in several human cancers (PMID: 31827398). In the human genome, SKA1, SKA2, and SKA3 constitute the SKA complex; this is necessary to maintain spindle microtubule attachment to kinetochores during mitosis (PMID: 36397719).

## Storage

Storage:

Store at -20°C. Stable for one year after shipment.

Storage Buffer:

PBS with 0.02% sodium azide and 50% glycerol pH 7.3.

Aliquoting is unnecessary for -20°C storage

For technical support and original validation data for this product please contact:

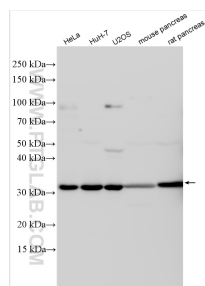
T: 4006900926

E: [Proteintech-CN@ptglab.com](mailto:Proteintech-CN@ptglab.com)

W: [ptgcn.com](http://ptgcn.com)

This product is exclusively available under Proteintech Group brand and is not available to purchase from any other manufacturer.

## Selected Validation Data



Various lysates were subjected to SDS PAGE followed by western blot with 31161-1-AP (C18orf24 antibody) at dilution of 1:2000 incubated at room temperature for 1.5 hours.