

# NRG1, isoform Beta1 Polyclonal antibody

Catalog Number: 31147-1-AP

## Basic Information

Catalog Number: 31147-1-AP	GenBank Accession Number: BC007675	Purification Method: Antigen affinity purification
Size: 450 µg/ml	GeneID (NCBI): 3084	Recommended Dilutions: WB 1:500-1:2000
Source: Rabbit	UNIPROT ID: Q02297	IHC 1:50-1:500
Isotype: IgG	Full Name: neuregulin 1	IF/ICC 1:200-1:800
Immunogen Catalog Number: AG35188	Calculated MW: 70 kDa	
	Observed MW: 71 kDa	

## Applications

Tested Applications:  
WB, IF/ICC, IHC, ELISA

Species Specificity:  
Human, Mouse, Rat

**Note-IHC: suggested antigen retrieval with TE buffer pH 9.0; (\*) Alternatively, antigen retrieval may be performed with citrate buffer pH 6.0**

Positive Controls:

WB : HeLa cells, mouse brain tissue, rat brain tissue

IHC : mouse cerebellum tissue,

IF/ICC : MCF-7 cells,

## Background Information

Neuregulin 1 (NRG1) is a trophic factor that has been implicated in neural development, neurotransmission, and synaptic plasticity. NRG1 has multiple isoforms that are generated by usage of different promoters and alternative splicing of a single gene. NRG1 and its receptor ErbB tyrosine kinase are expressed not only in the developing nervous system, but also in the adult brain. The immunogen of this antibody is against NRG1 isoform Beta1.

## Storage

Storage:

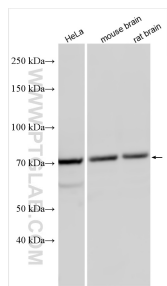
Store at -20°C. Stable for one year after shipment.

Storage Buffer:

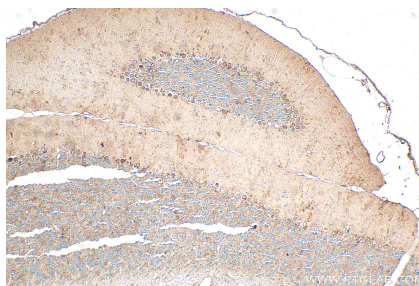
PBS with 0.02% sodium azide and 50% glycerol pH 7.3.

Aliquoting is unnecessary for -20°C storage

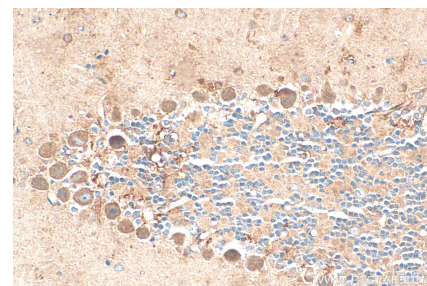
## Selected Validation Data



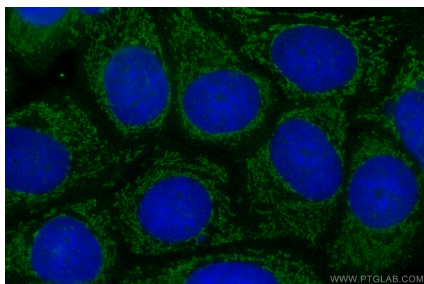
Various lysates were subjected to SDS PAGE followed by western blot with 31147-1-AP (NRG1, isoform Beta1 antibody) at dilution of 1:1000 incubated at room temperature for 1.5 hours.



Immunohistochemical analysis of paraffin-embedded mouse cerebellum tissue slide using 31147-1-AP (NRG1, isoform Beta1 antibody) at dilution of 1:200 (under 10x lens). Heat mediated antigen retrieval with Tris-EDTA buffer (pH 9.0).



Immunohistochemical analysis of paraffin-embedded mouse cerebellum tissue slide using 31147-1-AP (NRG1, isoform Beta1 antibody) at dilution of 1:200 (under 40x lens). Heat mediated antigen retrieval with Tris-EDTA buffer (pH 9.0).



Immunofluorescent analysis of (-20°C Methanol) fixed MCF-7 cells using NRG1, isoform Beta1 antibody (31147-1-AP) at dilution of 1:400 and CoraLite®488-Conjugated AffiniPure Goat Anti-Rabbit IgG(H+L).