

For Research Use Only

# CBX1 Polyclonal antibody, PBS Only

Catalog Number: 31108-1-PBS

Featured Product



## Basic Information

**Catalog Number:**

31108-1-PBS

**Concentration:**

1 mg/ml

**Source:**

Rabbit

**Isotype:**

IgG

**Immunogen Catalog Number:**

AG34901

**GenBank Accession Number:**

BC002609

**GeneID (NCBI):**

10951

**UNIPROT ID:**

P83916

**Full Name:**

chromobox homolog 1 (HP1 beta homolog Drosophila )

**Calculated MW:**

27 kDa

**Observed MW:**

21-27 kDa

**Purification Method:**

Antigen affinity Purification

## Applications

**Tested Applications:**

WB, Indirect ELISA

**Species Specificity:**

human, mouse

## Background Information

CBX1 (chromobox 1), also known as CBX. It is expected to be located in nucleus, the protein is expressed in all adult and embryonic tissues. It is a member of the heterochromatin protein family. CBX1 is enriched in the heterochromatin and associated with centromeres. The protein has a single N-terminal chromodomain which can bind to histone proteins via methylated lysine residues, and a C-terminal chromo shadow-domain (CSD) which is responsible for the homodimerization and interaction with a number of chromatin-associated nonhistone proteins. It may play an important role in the epigenetic control of chromatin structure and gene expression. The calculated molecular weight of CBX1 is 21 kDa.

## Storage

**Storage:**

Store at -80°C.

**The product is shipped with ice packs. Upon receipt, store it immediately at -80°C**

**Storage Buffer:**

PBS only, pH7.3

For technical support and original validation data for this product please contact:

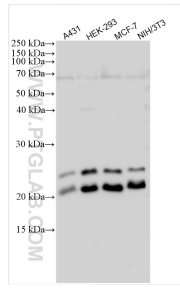
T: 4006900926

E: [Proteintech-CN@ptglab.com](mailto:Proteintech-CN@ptglab.com)

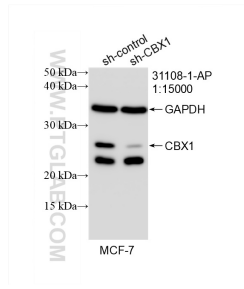
W: [ptgcn.com](http://ptgcn.com)

**This product is exclusively available under Proteintech Group brand and is not available to purchase from any other manufacturer.**

## Selected Validation Data



Various lysates were subjected to SDS PAGE followed by western blot with 31108-1-AP (CBX1 antibody) at dilution of 1:2000 incubated at room temperature for 1.5 hours. This data was developed using the same antibody clone with 31108-1-PBS in a different storage buffer formulation.



WB result of CBX1 antibody (31108-1-AP; 1:15000; incubated at room temperature for 1.5 hours) with sh-Control and sh-CBX1 transfected MCF-7 cells. This data was developed using the same antibody clone with 31108-1-PBS in a different storage buffer formulation.