

For Research Use Only

# GOLIM4 Polyclonal antibody, PBS Only

Catalog Number: 31083-1-PBS

Featured Product



## Basic Information

Catalog Number:

31083-1-PBS

Source:

Rabbit

Isotype:

IgG

Immunogen Catalog Number:

AG34962

GenBank Accession Number:

NM\_014498

GeneID (NCBI):

27333

UNIPROT ID:

O00461

Full Name:

golgi integral membrane protein 4

Calculated MW:

82 kDa

Observed MW:

130 kDa

Purification Method:

Antigen affinity Purification

## Applications

Tested Applications:

WB, IHC, IF/ICC, Indirect ELISA

Species Specificity:

human

## Background Information

Golgi integral membrane protein 4 (GOLIM4) is a 130-kDa membrane protein that is integrated into the cis/medial Golgi apparatus, which is a kind II Golgi protein. GOLIM4 is a Golgi protein that circulates between Golgi apparatus and endosomes, and its shuttle is pH sensitive (PMID:30068697).

## Storage

Storage:

Store at -80°C.

The product is shipped with ice packs. Upon receipt, store it immediately at -80°C

Storage Buffer:

PBS only, pH7.3

For technical support and original validation data for this product please contact:

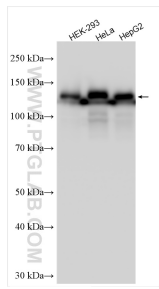
T: 4006900926

E: Proteintech-CN@ptglab.com

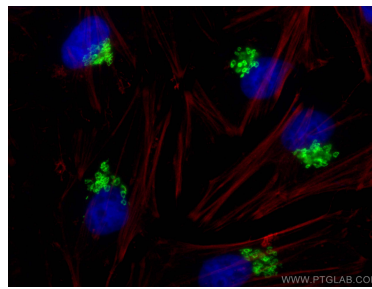
W: ptgcn.com

This product is exclusively available under Proteintech Group brand and is not available to purchase from any other manufacturer.

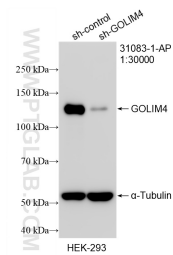
## Selected Validation Data



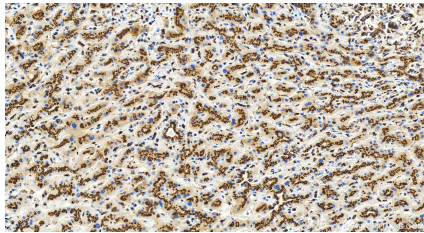
Various lysates were subjected to SDS PAGE followed by western blot with 31083-1-AP (GOLIM4 antibody) at dilution of 1:10000 incubated at room temperature for 1.5 hours. This data was developed using the same antibody clone with 31083-1-PBS in a different storage buffer formulation.



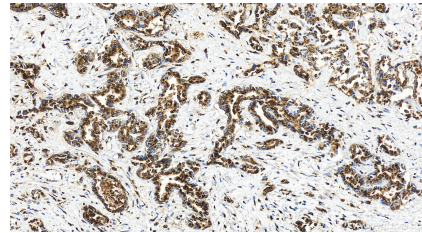
Immunofluorescent analysis of (4% PFA) fixed HeLa cells using GOLIM4 antibody (31083-1-AP) at dilution of 1:600 and CoraLite@488-Conjugated AffiniPure Goat Anti-Rabbit IgG(H+L) (SA00013-2), CL594-phalloidin (red). This data was developed using the same antibody clone with 31083-1-PBS in a different storage buffer formulation.



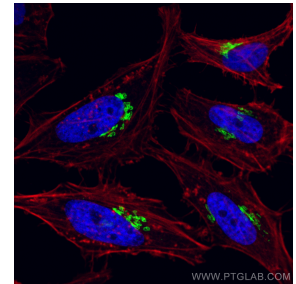
WB result of GOLIM4 antibody (31083-1-AP; 1:30000; incubated at room temperature for 1.5 hours) with sh-Control and sh-GOLIM4 transfected HEK-293 cells. This data was developed using the same antibody clone with 31083-1-PBS in a different storage buffer formulation.



Immunohistochemical analysis of paraffin-embedded human intrahepatic cholangiocarcinoma tissue slide using 31083-1-AP (GOLIM4 antibody) at dilution of 1:2000 (under 20x lens). Heat mediated antigen retrieval with Tris-EDTA buffer (pH 9.0). This data was developed using the same antibody clone with 31083-1-PBS in a different storage buffer formulation.



Immunohistochemical analysis of paraffin-embedded human intrahepatic cholangiocarcinoma tissue slide using 31083-1-AP (GOLIM4 antibody) at dilution of 1:2000 (under 20x lens). Heat mediated antigen retrieval with Tris-EDTA buffer (pH 9.0). This data was developed using the same antibody clone with 31083-1-PBS in a different storage buffer formulation.



Immunofluorescent analysis of (4% PFA) fixed HeLa cells using GOLIM4 antibody (31083-1-AP) at dilution of 1:600 and CoraLite@488-Conjugated Goat Anti-Rabbit IgG(H+L) (SA00013-2), CoraLite@594-Phalloidin (red). This data was developed using the same antibody clone with 31083-1-PBS in a different storage buffer formulation.