

# IFI35 Polyclonal antibody

Catalog Number: 31061-1-AP

## Basic Information

**Catalog Number:**

31061-1-AP

**Size:**

600 µg/ml

**Source:**

Rabbit

**Isotype:**

IgG

**Immunogen Catalog Number:**

AG34653

**GenBank Accession Number:**

BC001356

**GeneID (NCBI):**

3430

**UNIPROT ID:**

P80217

**Full Name:**

interferon-induced protein 35

**Calculated MW:**

31 kDa

**Observed MW:**

31-35 kDa

**Purification Method:**

Antigen affinity Purification

**Recommended Dilutions:**

WB 1:1000-1:4000

## Applications

**Tested Applications:**

WB, ELISA

**Species Specificity:**

Human

**Positive Controls:**

WB : A549 cells, HeLa cells, Jurkat cells, SW480 cells

## Background Information

IFI35 (interferon induced protein 35), also known as IFP35. It is expected to be located in cytoplasm, nucleus and extracellular space. The protein is expressed in a wide range of cell types, including fibroblasts, macrophages, and epithelial cells. Involved in several processes, including macrophage activation involved in immune response; positive regulation of defense response; and regulation of signal transduction. And the calculated molecular weight of IFI35 is 31 kDa.

## Storage

**Storage:**

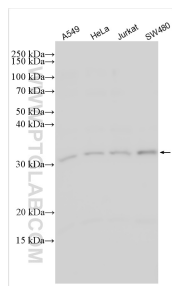
Store at -20°C. Stable for one year after shipment.

**Storage Buffer:**

PBS with 0.02% sodium azide and 50% glycerol pH 7.3.

Aliquoting is unnecessary for -20°C storage

## Selected Validation Data



Various lysates were subjected to SDS PAGE followed by western blot with 31061-1-AP (IFI35 antibody) at dilution of 1:2000 incubated at room temperature for 1.5 hours.