

INTS8 Polyclonal antibody

Catalog Number: 31038-1-AP

Basic Information

Catalog Number:

31038-1-AP

Size:

550 µg/ml

Source:

Rabbit

Isotype:

IgG

Immunogen Catalog Number:

AG34627

GenBank Accession Number:

BC136754

GeneID (NCBI):

55656

UNIPROT ID:

Q75QN2

Full Name:

integrator complex subunit 8

Calculated MW:

111 kDa

Observed MW:

111 kDa

Purification Method:

Antigen affinity purification

Recommended Dilutions:

WB 1:1000-1:5000

Applications

Tested Applications:

WB, ELISA

Species Specificity:

Human

Positive Controls:

WB : HeLa cells, HuH-7 cells, MCF-7 cells

Background Information

Integrator complex subunit 8 (INTS8) is one of the major components of RNA polymerase II and has been demonstrated to be involved in the cleavage of small nuclear RNAs and transcriptional processes (PMID: 34880328). INTS8 was robustly increased in neurodevelopmental diseases and numerous tumors. High INTS8 expression has a tight correlation with poor prognosis in multi-cancers (PMID: 30881114). Western blot analysis detected INTS8 at an apparent molecular mass of 111 kDa.

Storage

Storage:

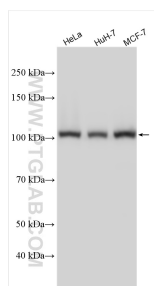
Store at -20°C. Stable for one year after shipment.

Storage Buffer:

PBS with 0.02% sodium azide and 50% glycerol pH 7.3.

Aliquoting is unnecessary for -20°C storage

Selected Validation Data



Various lysates were subjected to SDS PAGE followed by western blot with 31038-1-AP (INTS8 antibody) at dilution of 1:2500 incubated at room temperature for 1.5 hours.