

For Research Use Only

SVEP1 Polyclonal antibody

Catalog Number: 31030-1-AP



Basic Information

Catalog Number: 31030-1-AP	GenBank Accession Number: NM_153366	Purification Method: Antigen affinity Purification
Size: 300 ug/ml	GeneID (NCBI): 79987	Recommended Dilutions: WB 1:500-1:1000
Source: Rabbit	UNIPROT ID: Q4LDE5	
Isotype: IgG	Full Name: sushi, von Willebrand factor type A, EGF and pentraxin domain containing 1	
Immunogen Catalog Number: AG34316	Calculated MW: 390 kDa	
	Observed MW: 460 kDa	

Applications

Tested Applications: WB, ELISA	Positive Controls: WB : HuH-7 cells, SMMC-7721 cells
Species Specificity: human	

Background Information

SVEP1 (C9orf13), which is predicted to be located in the cell membrane, nucleus and cytoplasm. The protein is expressed in the whole epidermis, especially in the basal layer of epidermis, the upper and lower layers of basal layer and dermal fibroblasts in the upper dermis (PMID:27892606). At the same time, it is highly expressed in placenta, lung, adrenal gland and cerebellum, but weakly expressed in heart and skeletal muscle (PMID:11062057, PMID:27892606). The molecular weight of SVEP1 is 390 kDa. At the same time, it also has several isomers of 96kDa, 163kDa and 170kDa, and there are also glycosylation modifications. It is reported that the molecular weight is 460 kDa (PMID: 32371982). The protein may plays a role in initial cell attachment of stromal osteogenic cells.

Storage

Storage:
Store at -20°C. Stable for one year after shipment.
Storage Buffer:
PBS with 0.02% sodium azide and 50% glycerol pH 7.3.
Aliquoting is unnecessary for -20°C storage

For technical support and original validation data for this product please contact:

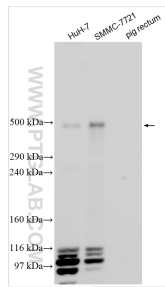
T: 4006900926

E: Proteintech-CN@ptglab.com

W: ptgcn.com

This product is exclusively available under Proteintech Group brand and is not available to purchase from any other manufacturer.

Selected Validation Data



Various lysates were subjected to SDS PAGE followed by western blot with 31030-1-AP (SVEP1 antibody) at dilution of 1:600 incubated at room temperature for 1.5 hours.