

For Research Use Only

MLLT1 Polyclonal antibody, PBS Only

Catalog Number: 31029-1-PBS

Featured Product



Basic Information

Catalog Number:

31029-1-PBS

Concentration:

1 mg/ml

Source:

Rabbit

Isotype:

IgG

Immunogen Catalog Number:

AG34210

GenBank Accession Number:

BC148806

GeneID (NCBI):

4298

UNIPROT ID:

Q03111

Full Name:

myeloid/lymphoid or mixed-lineage leukemia (trithorax homolog, Drosophila); translocated to, 1

Calculated MW:

62 kDa

Observed MW:

80 kDa

Purification Method:

Antigen affinity Purification

Applications

Tested Applications:

WB, IF/ICC, Indirect ELISA

Species Specificity:

human

Background Information

Storage

Storage:

Store at -80°C.

The product is shipped with ice packs. Upon receipt, store it immediately at -80°C

Storage Buffer:

PBS Only

For technical support and original validation data for this product please contact:

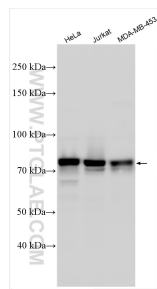
T: 4006900926

E: Proteintech-CN@ptglab.com

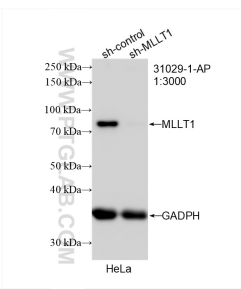
W: ptgcn.com

This product is exclusively available under Proteintech Group brand and is not available to purchase from any other manufacturer.

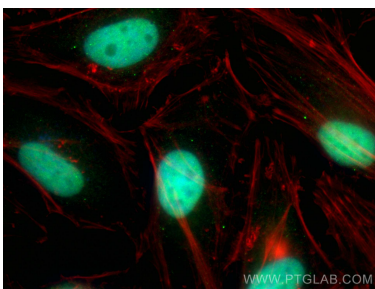
Selected Validation Data



Various lysates were subjected to SDS PAGE followed by western blot with 31029-1-AP (MLLT1 antibody) at dilution of 1:1000 incubated at room temperature for 1.5 hours. This data was developed using the same antibody clone with 31029-1-PBS in a different storage buffer formulation.



WB result of MLLT1 antibody (31029-1-AP; 1:3000; incubated at room temperature for 1.5 hours) with sh-Control and sh-MLLT1 transfected HeLa cells. This data was developed using the same antibody clone with 31029-1-PBS in a different storage buffer formulation.



Immunofluorescent analysis of (4% PFA) fixed HeLa cells using MLLT1 antibody (31029-1-AP) at dilution of 1:200 and CoraLite®488-Conjugated AffiniPure Goat Anti-Rabbit IgG(H+L) (SA00013-2), CL594-phalloidin (red). This data was developed using the same antibody clone with 31029-1-PBS in a different storage buffer formulation.