

For Research Use Only

# MLLT1 Polyclonal antibody

Catalog Number: 31029-1-AP

Featured Product



## Basic Information

Catalog Number:

31029-1-AP

Concentration:

400 ug/ml

Source:

Rabbit

Isotype:

IgG

Immunogen Catalog Number:

AG34210

GenBank Accession Number:

BC148806

GeneID (NCBI):

4298

UNIPROT ID:

Q03111

Full Name:

myeloid/lymphoid or mixed-lineage leukemia (trithorax homolog, Drosophila); translocated to, 1

Calculated MW:

62 kDa

Observed MW:

80 kDa

Purification Method:

Antigen affinity Purification

Recommended Dilutions:

WB 1:500-1:2000

IF/ICC 1:50-1:500

## Applications

Tested Applications:

WB, IF/ICC, ELISA

Species Specificity:

human

Positive Controls:

WB : MDA-MB-453 cells, HeLa cells, Jurkat cells

IF/ICC : HeLa cells,

## Background Information

### Storage

Storage:

Store at -20°C. Stable for one year after shipment.

Storage Buffer:

PBS with 0.02% sodium azide and 50% glycerol pH 7.3.

Aliquoting is unnecessary for -20°C storage

For technical support and original validation data for this product please contact:

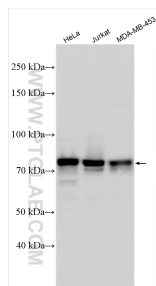
T: 4006900926

E: [Proteintech-CN@ptglab.com](mailto:Proteintech-CN@ptglab.com)

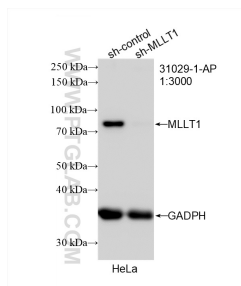
W: [ptgcn.com](http://ptgcn.com)

This product is exclusively available under Proteintech Group brand and is not available to purchase from any other manufacturer.

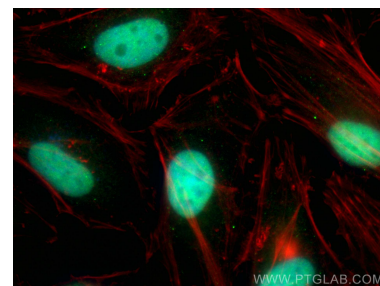
## Selected Validation Data



Various lysates were subjected to SDS PAGE followed by western blot with 31029-1-AP (MLLT1 antibody) at dilution of 1:1000 incubated at room temperature for 1.5 hours.



WB result of MLLT1 antibody (31029-1-AP; 1:3000; incubated at room temperature for 1.5 hours) with sh-Control and sh-MLLT1 transfected HeLa cells.



Immunofluorescent analysis of (4% PFA) fixed HeLa cells using MLLT1 antibody (31029-1-AP) at dilution of 1:200 and CoraLite®488-Conjugated AffiniPure Goat Anti-Rabbit IgG(H+L) (SA00013-2), CL594-phalloidin (red).