

For Research Use Only

# ENOSF1 Polyclonal antibody

Catalog Number: 31022-1-AP



## Basic Information

**Catalog Number:**

31022-1-AP

**Concentration:**

450 ug/ml

**Source:**

Rabbit

**Isotype:**

IgG

**Immunogen Catalog Number:**

AG34665

**GenBank Accession Number:**

BC001285

**GeneID (NCBI):**

55556

**UNIPROT ID:**

Q7L5Y1

**Full Name:**

enolase superfamily member 1

**Calculated MW:**

50 kDa

**Observed MW:**

49 kDa

**Purification Method:**

Antigen affinity Purification

**Recommended Dilutions:**

WB 1:1000-1:4000

IP 0.5-4.0 ug for 1.0-3.0 mg of total protein lysate

## Applications

**Tested Applications:**

WB, FC (Intra), IP, ELISA

**Species Specificity:**

human

**Positive Controls:**

WB : HeLa cells, K-562 cells, MCF-7 cells

IP : MCF-7 cells,

## Background Information

ENOSF1 (Mitochondrial enolase superfamily member 1) is also named as RTS and TYMSAS. The ENOSF1 gene, responsible for encoding the protein mitochondrial enolase superfamily member 1 (ENOF1), exhibits three distinct isoforms. One of these isoforms has been identified as an L-fuconate dehydratase, actively participating in the catabolism of L-fucose, a sugar integral to the carbohydrate composition of cellular glycoproteins (PMID: 38203276). The ENOSF1 transcript has been shown to act as antisense RNA and inhibit TYMS expression (PMID: 35931051).

## Storage

**Storage:**

Store at -20°C. Stable for one year after shipment.

**Storage Buffer:**

PBS with 0.02% sodium azide and 50% glycerol

Aliquoting is unnecessary for -20°C storage

For technical support and original validation data for this product please contact:

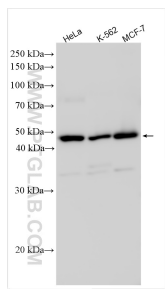
T: 4006900926

E: [Proteintech-CN@ptglab.com](mailto:Proteintech-CN@ptglab.com)

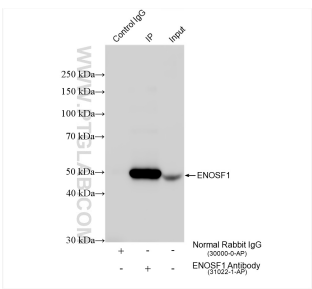
W: [ptgcn.com](http://ptgcn.com)

This product is exclusively available under Proteintech Group brand and is not available to purchase from any other manufacturer.

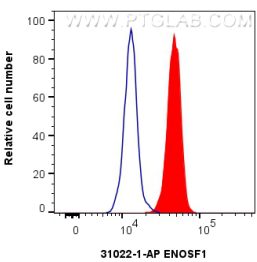
## Selected Validation Data



Various lysates were subjected to SDS PAGE followed by western blot with 31022-1-AP (ENOSF1 antibody) at dilution of 1:2000 incubated at room temperature for 1.5 hours.



IP result of anti-ENOSF1 (IP:31022-1-AP, 4ug; Detection:31022-1-AP 1:2000) with MCF-7 cells lysate 1600 ug.



1x10<sup>6</sup> HeLa cells were intracellularly stained with 0.25 ug ENOSF1 Polyclonal antibody (31022-1-AP) and CoraLite®488-Conjugated Goat Anti-Rabbit IgG(H+L) (SA00013-2)(red), or 0.25 ug Isotype Control. Cells were fixed with 4% PFA and permeabilized with Flow Cytometry Perm Buffer (PF00011-C).