

For Research Use Only

Caspase 1 Polyclonal antibody

Catalog Number: 31020-1-AP

7 Publications



Basic Information

Catalog Number:

31020-1-AP

Concentration:

600 ug/ml

Source:

Rabbit

Isotype:

IgG

Immunogen Catalog Number:

AG34441

GenBank Accession Number:

BC008152

GeneID (NCBI):

12362

UNIPROT ID:

P29452

Full Name:

caspase 1

Observed MW:

35-40 kDa

Purification Method:

Antigen affinity Purification

Recommended Dilutions:

WB 1:500-1:2000

Applications

Tested Applications:

WB, ELISA

Cited Applications:

WB, IHC

Species Specificity:

mouse, rat

Cited Species:

mouse, rat

Positive Controls:

WB : mouse heart tissue, mouse skeletal muscle tissue, rat heart tissue, rat skeletal muscle tissue

Background Information

CASP1(caspase-1) is also named as IL1BC, IL1BCE and belongs to the peptidase C14A family. It is a cysteine protease that regulates inflammatory processes through its capacity to process and activate the interleukin-1-beta (IL1B), IL18, and IL33 precursor proteins. The active caspase-1 can increase cellular membrane permeability and intracellular calcium levels, which facilitates lysosome exocytosis and release of host antimicrobial factors and microbial products (PMID:21804020). 31020-1-AP is designed for mouse caspase 1.

Notable Publications

Author	Pubmed ID	Journal	Application
L Bai	39545792	Physiol Res	WB
Zhaobai Lao	39473981	J Inflamm Res	IHC
Lu Chen	39447994	Free Radic Biol Med	WB

Storage

Storage:

Store at -20°C. Stable for one year after shipment.

Storage Buffer:

PBS with 0.02% sodium azide and 50% glycerol pH 7.3.

Aliquoting is unnecessary for -20°C storage

For technical support and original validation data for this product please contact:

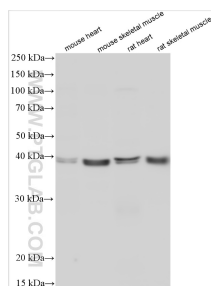
T: 4006900926

E: Proteintech-CN@ptglab.com

W: ptgcn.com

This product is exclusively available under Proteintech Group brand and is not available to purchase from any other manufacturer.

Selected Validation Data



Various lysates were subjected to SDS PAGE followed by western blot with 31020-1-AP (Casp1 antibody) at dilution of 1:1000 incubated at room temperature for 1.5 hours.