

For Research Use Only

# SLC35D1 Polyclonal antibody, PBS Only

Catalog Number: 31019-1-PBS



## Basic Information

Catalog Number:

31019-1-PBS

Size:

1 mg/ml

Source:

Rabbit

Isotype:

IgG

Immunogen Catalog Number:

AG34372

GenBank Accession Number:

BC093786

GeneID (NCBI):

23169

UNIPROT ID:

Q9NTN3

Full Name:

solute carrier family 35 (UDP-glucuronic acid/UDP-N-acetylgalactosamine dual transporter), member D1

Calculated MW:

355 aa, 39 kDa

Observed MW:

35-39 kDa

Purification Method:

Antigen affinity Purification

## Applications

Tested Applications:

WB, Indirect ELISA

Species Specificity:

human, mouse, rat

## Background Information

SLC35D1 belongs to the TPT transporter family and is a nucleotide sugar transporter (NST) expressed in the endoplasmic reticulum. Loss-of-function mutations in SLC35D1 cause Schneckbecken dysplasia, a severe skeletal dysplasia (PMID: 19508970; 35934917).

## Storage

Storage:

Store at -80°C.

The product is shipped with ice packs. Upon receipt, store it immediately at -80°C

Storage Buffer:

PBS Only

For technical support and original validation data for this product please contact:

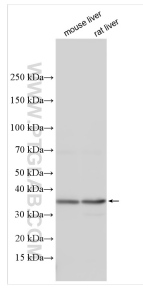
T: 4006900926

E: [Proteintech-CN@ptglab.com](mailto:Proteintech-CN@ptglab.com)

W: [ptgcn.com](http://ptgcn.com)

This product is exclusively available under Proteintech Group brand and is not available to purchase from any other manufacturer.

## Selected Validation Data



Various lysates were subjected to SDS PAGE followed by western blot with 31019-1-AP (SLC35D1 antibody) at dilution of 1:2000 incubated at room temperature for 1.5 hours. This data was developed using the same antibody clone with 31019-1-PBS in a different storage buffer formulation.