

For Research Use Only

TLE4 Polyclonal antibody

Catalog Number: 30959-1-AP



Basic Information

Catalog Number:

30959-1-AP

Concentration:

400 ug/ml

Source:

Rabbit

Isotype:

IgG

Immunogen Catalog Number:

AG34006

GenBank Accession Number:

BC059405

GeneID (NCBI):

7091

UNIPROT ID:

Q04727

Full Name:

transducin-like enhancer of split 4
(E(sp1) homolog, Drosophila)

Calculated MW:

84 kDa

Observed MW:

76-88 kDa

Purification Method:

Antigen affinity Purification

Recommended Dilutions:

WB 1:500-1:1000

IP 0.5-4.0 ug for 1.0-3.0 mg of total
protein lysate

Applications

Tested Applications:

WB, IP, ELISA

Species Specificity:

human, mouse

Positive Controls:

WB : K-562 cells, Neuro-2a cells

IP : K-562 cells,

Background Information

TLE4 (Transducin-like enhancer protein 4), also known as GRG4. It is predicted to be located in the nucleus. Tle4 promotes acquisition of corticothalamic identity and blocks emergence of core characteristics of subcerebral/corticospinal projection neuron identity, including gene expression and connectivity. During the first post-natal week, when corticothalamic innervation is ongoing, Tle4 is required to stabilize corticothalamic neuron identity, limiting interference from differentiation programs of developmentally related neuron classes (PMID: 37561632). The molecular weight of TLE4 is 76 kDa.

Storage

Storage:

Store at -20°C. Stable for one year after shipment.

Storage Buffer:

PBS with 0.02% sodium azide and 50% glycerol pH 7.3.

Aliquoting is unnecessary for -20°C storage

For technical support and original validation data for this product please contact:

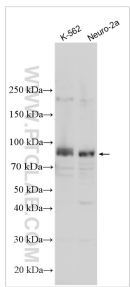
T: 4006900926

E: Proteintech-CN@ptglab.com

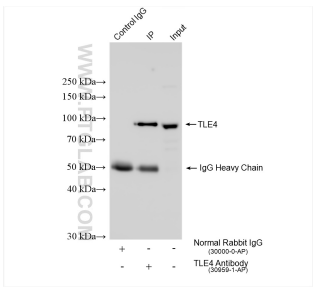
W: ptgcn.com

This product is exclusively available under Proteintech Group brand and is not available to purchase from any other manufacturer.

Selected Validation Data



Various lysates were subjected to SDS PAGE followed by western blot with 30959-1-AP (TLE4 antibody) at dilution of 1:600 incubated at room temperature for 1.5 hours.



IP result of anti-TLE4 (IP:30959-1-AP, 4ug; Detection:30959-1-AP 1:800) with K-562 cells lysate 1720 ug.