

For Research Use Only

# SPP2 Polyclonal antibody, PBS Only

Catalog Number:30922-1-PBS



## Basic Information

Catalog Number:

30922-1-PBS

Size:

1 mg/ml

Source:

Rabbit

Isotype:

IgG

Immunogen Catalog Number:

AG29299

GenBank Accession Number:

NM\_006944

GeneID (NCBI):

6694

UNIPROT ID:

Q13103

Full Name:

secreted phosphoprotein 2, 24kDa

Calculated MW:

24 kDa

Observed MW:

24 kDa

Purification Method:

Antigen affinity purification

## Applications

Tested Applications:

WB, Indirect ELISA

Species Specificity:

human

## Background Information

SPP2 (Secreted phosphoprotein 24), also known as SPP24. SPP2 is a secreted phosphoprotein, which was originally isolated and purified from bovine bone density. It is widely distributed in the body, mainly produced in the liver and transported to other tissues. SPP2 is expressed in many tissues, especially in the liver. Studies have shown that the expression level of SPP2 is up-regulated in liver cirrhosis. In addition, the expression of SPP2 is significantly related to many genes, including APOA1, SLC2A2 and TTR (PMID: 38448371). SPP2 has many biological functions, including: it can inhibit the activity of cysteine protease, participate in bone formation, inhibit calcification, and regulate BMP/TGF- $\beta$  signaling pathway. SPP2 may be a tumor suppressor, which inhibits the development of HCC by inhibiting BMP/TGF- $\beta$  signaling pathway. The molecular weight of SPP2 is 24 kDa.

## Storage

Storage:

Store at -80°C.

**The product is shipped with ice packs. Upon receipt, store it immediately at -80°C**

Storage Buffer:

PBS Only

For technical support and original validation data for this product please contact:

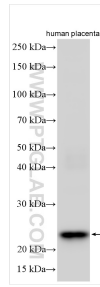
T: 4006900926

E: Proteintech-CN@ptglab.com

W: ptgcn.com

**This product is exclusively available under Proteintech Group brand and is not available to purchase from any other manufacturer.**

## Selected Validation Data



Various lysates were subjected to SDS PAGE followed by western blot with 30922-1-AP (SPP2 antibody) at dilution of 1:3000 incubated at room temperature for 1.5 hours. This data was developed using the same antibody clone with 30922-1-PBS in a different storage buffer formulation.