

For Research Use Only

SPP2 Polyclonal antibody

Catalog Number:30922-1-AP



Basic Information

Catalog Number:

30922-1-AP

Size:

400 ug/ml

Source:

Rabbit

Isotype:

IgG

Immunogen Catalog Number:

AG29299

GenBank Accession Number:

NM_006944

GeneID (NCBI):

6694

UNIPROT ID:

Q13103

Full Name:

secreted phosphoprotein 2, 24kDa

Calculated MW:

24 kDa

Observed MW:

24 kDa

Purification Method:

Antigen affinity purification

Recommended Dilutions:

WB 1:1000-1:6000

Applications

Tested Applications:

WB, ELISA

Species Specificity:

human

Positive Controls:

WB : human placenta tissue,

Background Information

SPP2 (Secreted phosphoprotein 24), also known as SPP24. SPP2 is a secreted phosphoprotein, which was originally isolated and purified from bovine bone density. It is widely distributed in the body, mainly produced in the liver and transported to other tissues. SPP2 is expressed in many tissues, especially in the liver. Studies have shown that the expression level of SPP2 is up-regulated in liver cirrhosis. In addition, the expression of SPP2 is significantly related to many genes, including APOA1, SLC2A2 and TTR (PMID: 38448371). SPP2 has many biological functions, including: it can inhibit the activity of cysteine protease, participate in bone formation, inhibit calcification, and regulate BMP/TGF- β signaling pathway. SPP2 may be a tumor suppressor, which inhibits the development of HCC by inhibiting BMP/TGF- β signaling pathway. The molecular weight of SPP2 is 24 kDa.

Storage

Storage:

Store at -20°C. Stable for one year after shipment.

Storage Buffer:

PBS with 0.02% sodium azide and 50% glycerol pH 7.3.

Aliquoting is unnecessary for -20°C storage

For technical support and original validation data for this product please contact:

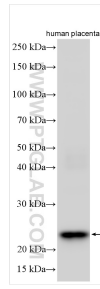
T: 4006900926

E: Proteintech-CN@ptglab.com

W: ptgcn.com

This product is exclusively available under Proteintech Group brand and is not available to purchase from any other manufacturer.

Selected Validation Data



Various lysates were subjected to SDS PAGE followed by western blot with 30922-1-AP (SPP2 antibody) at dilution of 1:3000 incubated at room temperature for 1.5 hours.