

COQ2 Polyclonal antibody

Catalog Number: 30909-1-AP

Basic Information

Catalog Number:

30909-1-AP

Size:

600 µg/ml

Source:

Rabbit

Isotype:

IgG

Immunogen Catalog Number:

AG29155

GenBank Accession Number:

BC008804

GeneID (NCBI):

27235

UNIPROT ID:

Q96H96

Full Name:coenzyme Q2 homolog,
prenyltransferase (yeast)**Calculated MW:**

371 aa, 40 kDa

Observed MW:

35 kDa, 40 kDa, 45 kDa

Purification Method:

Antigen affinity Purification

Recommended Dilutions:

WB 1:1000-1:4000

Applications

Tested Applications:

WB, ELISA

Species Specificity:

Human

Positive Controls:

WB : HEK-293 cells, U-87 MG cells

Background Information

COQ2 (coenzyme Q2, polyprenyltransferase), also known as CL640. It is expected to be located in mitochondrion inner membrane. And the protein is highly expressed in skeletal muscle, adrenal glands and the heart. COQ2 is a redox carrier in the mitochondrial respiratory chain and a lipid-soluble antioxidant. This enzyme, which is part of the coenzyme Q10 pathway, catalyzes the prenylation of parahydroxybenzoate with an all-trans polyprenyl group. Mutations in this gene cause coenzyme Q10 deficiency, a mitochondrial encephalomyopathy, and also COQ2 nephropathy, an inherited form of mitochondriopathy with primary renal involvement. The protein has three isoforms, the calculated molecular weight are 35, 40, 45 kDa.

Storage

Storage:

Store at -20°C. Stable for one year after shipment.

Storage Buffer:

PBS with 0.02% sodium azide and 50% glycerol pH 7.3.

Aliquoting is unnecessary for -20°C storage

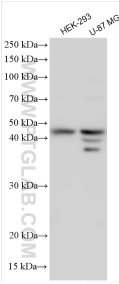
For technical support and original validation data for this product please contact:

T: 4006900926

E: Proteintech-CN@ptglab.comW: ptgcn.com

This product is exclusively available under Proteintech Group brand and is not available to purchase from any other manufacturer.

Selected Validation Data



Various lysates were subjected to SDS PAGE followed by western blot with 30909-1-AP (COQ2 antibody) at dilution of 1:2000 incubated at room temperature for 1.5 hours.