

For Research Use Only

# MPC1 Polyclonal antibody

Catalog Number: 30868-1-AP



## Basic Information

Catalog Number:

30868-1-AP

Size:

350 ug/ml

Source:

Rabbit

Isotype:

IgG

Immunogen Catalog Number:

AG28826

GenBank Accession Number:

BC000810

GeneID (NCBI):

51660

UNIPROT ID:

Q9Y5U8

Full Name:

brain protein 44-like

Calculated MW:

12 kDa

Observed MW:

12 kDa, 20-24 kDa

Purification Method:

Antigen affinity purification

Recommended Dilutions:

WB 1:500-1:1000

## Applications

Tested Applications:

WB, ELISA

Species Specificity:

human

Positive Controls:

WB : HL-60 cells,

## Background Information

MPC1, also known as BRP44L. BRP44L is predicted to be located in Mitochondrion inner membrane. The protein forms a heterodimer with MPC2, and the heterodimer is a more stable and dominant form (PMID:26253029, PMID:32403431). Mpc1 and Mpc2 associate to form an ~150-kilodalton complex in the inner mitochondrial membrane. Yeast and Drosophila mutants lacking MPC1 display impaired pyruvate metabolism, with an accumulation of upstream metabolites and a depletion of tricarboxylic acid cycle intermediates. Loss of yeast Mpc1 results in defective mitochondrial pyruvate uptake, and silencing of MPC1 or MPC2 in mammalian cells impairs pyruvate oxidation. A point mutation in MPC1 provides resistance to a known inhibitor of the mitochondrial pyruvate carrier (PMID: 22628558). The molecular weight of MPC1 is 12 kDa.

## Storage

Storage:

Store at -20°C. Stable for one year after shipment.

Storage Buffer:

PBS with 0.02% sodium azide and 50% glycerol pH 7.3.

Aliquoting is unnecessary for -20°C storage

For technical support and original validation data for this product please contact:

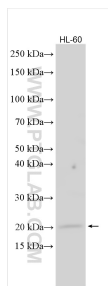
T: 4006900926

E: [Proteintech-CN@ptglab.com](mailto:Proteintech-CN@ptglab.com)

W: [ptgcn.com](http://ptgcn.com)

This product is exclusively available under Proteintech Group brand and is not available to purchase from any other manufacturer.

## Selected Validation Data



Various lysates were subjected to SDS PAGE followed by western blot with 30868-1-AP (BRP44L antibody) at dilution of 1:500 incubated at room temperature for 1.5 hours.