

For Research Use Only

SETD4 Polyclonal antibody, PBS Only

Catalog Number:30855-1-PBS



Basic Information

Catalog Number:

30855-1-PBS

Source:

Rabbit

Isotype:

IgG

Immunogen Catalog Number:

AG33842

GenBank Accession Number:

BC002898

GeneID (NCBI):

54093

UNIPROT ID:

Q9NVD3

Full Name:

SET domain containing 4

Calculated MW:

440 aa, 50 kDa

Observed MW:

40 kDa

Purification Method:

Antigen affinity Purification

Applications

Tested Applications:

WB, Indirect ELISA

Species Specificity:

human

Background Information

As a lysine methyl-transferase of histone, SET domain-containing protein 4 (SETD4) has been reported to play a role in cell proliferation by controlling related gene expressions. Limited reports reveal that SETD4 is not only indispensable for embryonic neurogenesis, development and regeneration of pancreatic and intestinal organs, regulation of bone marrow mesenchymal stem cells, and modulation of inflammatory cytokines of macrophages, but also involved in the tumorigenesis, progression, and chemotherapy resistance of various tumors, including liver cancer, breast cancer, lymphoma and Non-small Cell Lung Cancer. (PMID: 35545041, PMID: 36027907, PMID: 37879429)

Storage

Storage:

Store at -80°C.

The product is shipped with ice packs. Upon receipt, store it immediately at -80°C

Storage Buffer:

PBS only, pH7.3

For technical support and original validation data for this product please contact:

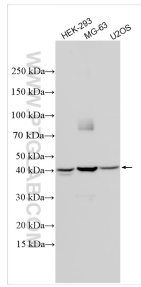
T: 4006900926

E: Proteintech-CN@ptglab.com

W: ptgcn.com

This product is exclusively available under Proteintech Group brand and is not available to purchase from any other manufacturer.

Selected Validation Data



Various lysates were subjected to SDS PAGE followed by western blot with 30855-1-AP (SETD4 antibody) at dilution of 1:600 incubated at room temperature for 1.5 hours. This data was developed using the same antibody clone with 30855-1-PBS in a different storage buffer formulation.