

For Research Use Only

EGFR Polyclonal antibody

Catalog Number: 30847-1-AP



Basic Information

Catalog Number: 30847-1-AP	GenBank Accession Number: NM_207655	Purification Method: Antigen affinity Purification
Concentration: 350 ug/ml	GeneID (NCBI): 13649	Recommended Dilutions: WB 1:2000-1:10000 IF/ICC 1:200-1:800
Source: Rabbit	UNIPROT ID: Q01279	
Isotype: IgG	Full Name: epidermal growth factor receptor	
Immunogen Catalog Number: AG33621	Calculated MW: 135 kDa Observed MW: 140-180 kDa	

Applications

Tested Applications: WB, IF/ICC, ELISA	Positive Controls:
Species Specificity: human, mouse, rat	WB : A549 cells, mouse liver tissue IF/ICC : A431 cells,

Background Information

The epidermal growth factor receptor (EGFR) is a member of the ErbB family of receptor tyrosine kinases (RTKs). Binding of EGFR to epidermal growth factor family ligands triggers a signaling cascade through allosteric activation of epidermal growth factor receptor kinase and trans-autophosphorylation of key tyrosine residues in the tail of the cytoplasmic receptor (PMID: 24691965). Due to phosphorylation, the apparent molecular weight is higher than the calculated molecular weight of 140 kDa. EGFR has been implicated in learning and memory enhancement and pain signaling in mammals (PMID: 20639532 and 35131940).

Storage

Storage:
Store at -20°C. Stable for one year after shipment.
Storage Buffer:
PBS with 0.02% sodium azide and 50% glycerol pH 7.3.
Aliquoting is unnecessary for -20°C storage

For technical support and original validation data for this product please contact:

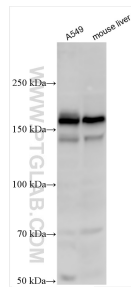
T: 4006900926

E: Proteintech-CN@ptglab.com

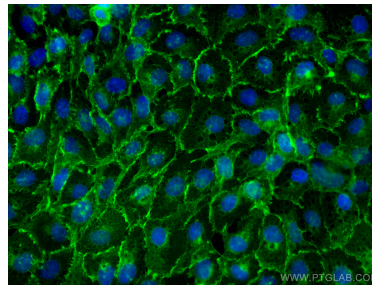
W: ptgcn.com

This product is exclusively available under Proteintech Group brand and is not available to purchase from any other manufacturer.

Selected Validation Data



Various lysates were subjected to SDS PAGE followed by western blot with 30847-1-AP (Egfr antibody) at dilution of 1:5000 incubated at room temperature for 1.5 hours.



Immunofluorescent analysis of (4% PFA) fixed A431 cells using Egfr antibody (30847-1-AP) at dilution of 1:400 and CoraLite®488-Conjugated AffiniPure Goat Anti-Rabbit IgG(H+L).