

For Research Use Only

# C19orf63 Polyclonal antibody, PBS Only

Catalog Number: 30844-1-PBS



## Basic Information

<b>Catalog Number:</b> 30844-1-PBS	<b>GenBank Accession Number:</b> BC035001	<b>Purification Method:</b> Antigen affinity Purification
<b>Source:</b> Rabbit	<b>GeneID (NCBI):</b> 284361	
<b>Isotype:</b> IgG	<b>UNIPROT ID:</b> Q5UCC4	
<b>Immunogen Catalog Number:</b> AG34064	<b>Full Name:</b> chromosome 19 open reading frame 63	
	<b>Observed MW:</b> 28 kDa	

## Applications

**Tested Applications:**  
WB, IHC, Indirect ELISA

**Species Specificity:**  
human, mouse

## Background Information

EMC10 (Endoplasmic Reticulum Membrane Protein Complex Subunit 10) is one of the key components of the highly conserved endoplasmic reticulum membrane protein complex (EMC). The core function of this complex is to act as an insertase and chaperone in the endoplasmic reticulum, assisting in the correct folding, assembly, and membrane integration of membrane proteins, and preventing the aggregation of misfolded proteins. Studies have shown that EMC10 plays a dual role in cells: within the cell, it ensures the biogenesis of important membrane proteins such as G protein-coupled receptors (GPCRs); moreover, it can be secreted outside the cell (referred to as sEMC10), where it acts as a novel signaling molecule to activate the hypothalamic-pituitary axis, regulating energy metabolism and body weight in the body, and is closely related to obesity and metabolic diseases.

## Storage

**Storage:**  
Store at -80°C.  
**The product is shipped with ice packs. Upon receipt, store it immediately at -80°C**

**Storage Buffer:**  
PBS only, pH7.3

For technical support and original validation data for this product please contact:

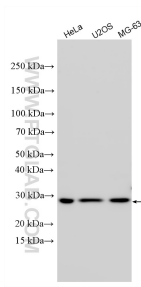
T: 4006900926

E: [Proteintech-CN@ptglab.com](mailto:Proteintech-CN@ptglab.com)

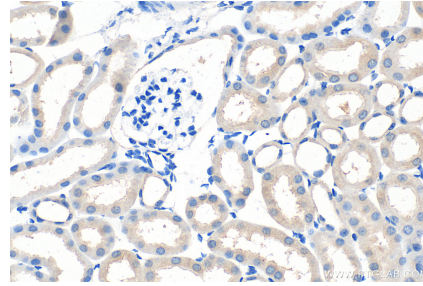
W: [ptgcn.com](http://ptgcn.com)

**This product is exclusively available under Proteintech Group brand and is not available to purchase from any other manufacturer.**

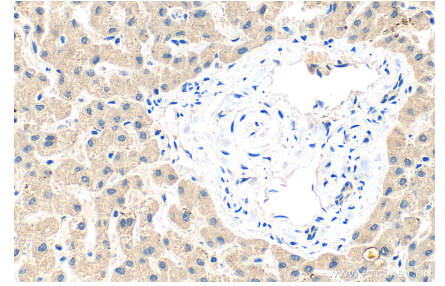
## Selected Validation Data



Various lysates were subjected to SDS PAGE followed by western blot with 30844-1-AP (C19orf63 antibody) at dilution of 1:3000 incubated at room temperature for 1.5 hours. This data was developed using the same antibody clone with 30844-1-PBS in a different storage buffer formulation.



Immunohistochemical analysis of paraffin-embedded mouse kidney tissue slide using 30844-1-AP (C19orf63 antibody) at dilution of 1:400 (under 40x lens). Heat mediated antigen retrieval with Tris-EDTA buffer (pH 9.0). This data was developed using the same antibody clone with 30844-1-PBS in a different storage buffer formulation.



Immunohistochemical analysis of paraffin-embedded human liver tissue slide using 30844-1-AP (C19orf63 antibody) at dilution of 1:400 (under 40x lens). Heat mediated antigen retrieval with Tris-EDTA buffer (pH 9.0). This data was developed using the same antibody clone with 30844-1-PBS in a different storage buffer formulation.