

For Research Use Only

SLC6A20 Polyclonal antibody

Catalog Number: 30843-1-AP



Basic Information

Catalog Number:

30843-1-AP

Source:

Rabbit

Isotype:

IgG

Immunogen Catalog Number:

AG33967

GenBank Accession Number:

BC136431

GeneID (NCBI):

54716

UNIPROT ID:

Q9NP91

Full Name:

solute carrier family 6 (proline IMINO transporter), member 20

Observed MW:

50-60 kDa

Purification Method:

Antigen affinity Purification

Recommended Dilutions:

WB: 1:500-1:1000

IF-P: 1:50-1:500

Applications

Tested Applications:

WB, IF-P, ELISA

Species Specificity:

human, mouse, rat

Positive Controls:

WB: mouse kidney tissue, HEK-293 cells, rat kidney tissue

IF-P: mouse brain tissue,

Background Information

SLC6A20 also known as XT3, SIT1, belongs to the family of solute carrier 6, mediating the transport of neutral amino acids from the extracellular milieu toward cell or storage vesicles utilizing an electric membrane potential as the driving force. SLC6A20 is expressed in the kidney and small intestine and is localized in the brush marginal membrane of the proximal renal tubules (PMID: 16174864). Mutations in SLC6A20 are associated with Hyperglycinuria and Iminoglycinuria (PMID: 19033659)

Storage

Storage:

Store at -20°C. Stable for one year after shipment.

Storage Buffer:

PBS with 0.02% sodium azide and 50% glycerol, pH7.3

Aliquoting is unnecessary for -20°C storage

For technical support and original validation data for this product please contact:

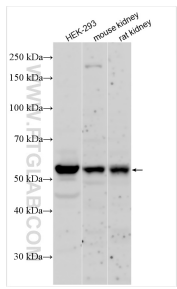
T: 4006900926

E: Proteintech-CN@ptglab.com

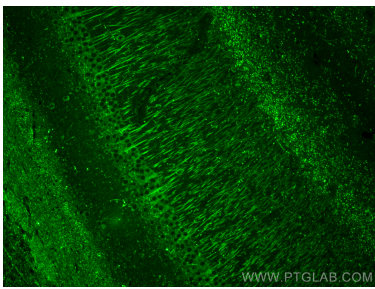
W: ptgcn.com

This product is exclusively available under Proteintech Group brand and is not available to purchase from any other manufacturer.

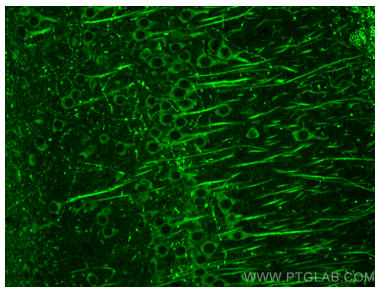
Selected Validation Data



Various lysates were subjected to SDS PAGE followed by western blot with 30843-1-AP (SLC6A20 antibody) at dilution of 1:800 incubated at room temperature for 1.5 hours.



Immunofluorescent analysis of (4% PFA) fixed paraffin-embedded mouse brain tissue using SLC6A20 antibody (30843-1-AP) at dilution of 1:200 and Multi-rAb CoraLite® Plus 488-Goat Anti-Rabbit Recombinant Secondary Antibody (H+L) (RGAR002). Heat mediated antigen retrieval with Tris-EDTA buffer (pH 9.0).



Immunofluorescent analysis of (4% PFA) fixed paraffin-embedded mouse brain tissue using SLC6A20 antibody (30843-1-AP) at dilution of 1:200 and Multi-rAb CoraLite® Plus 488-Goat Anti-Rabbit Recombinant Secondary Antibody (H+L) (RGAR002). Heat mediated antigen retrieval with Tris-EDTA buffer (pH 9.0).