

For Research Use Only

PTPRM/RPTPmu Polyclonal antibody

Catalog Number:30763-1-AP



Basic Information

Catalog Number:

30763-1-AP

Concentration:

500 µg/ml

Source:

Rabbit

Isotype:

IgG

Immunogen Catalog Number:

AG33475

GenBank Accession Number:

NM_002845

GeneID (NCBI):

5797

UNIPROT ID:

P28827

Full Name:

protein tyrosine phosphatase,
receptor type, M

Calculated MW:

164KD

Observed MW:

80 kDa, 100 kDa, 200 kDa

Purification Method:

Antigen affinity purification

Recommended Dilutions:

WB: 1:500-1:3000

Applications

Tested Applications:

WB, ELISA

Species Specificity:

human, rat

Positive Controls:

WB : MCF-7 cells, MDA-MB-231 cells, U-87 MG cells, rat
eye tissue

Background Information

PTPRM, also known as protein tyrosine phosphatase receptor type M or RPTPmu, is a protein with a molecular weight of approximately 155 kDa. It is a receptor-type tyrosine phosphatase involved in cell-cell adhesion, migration, and signaling. It exists in two forms, either a full-length 200 kDa form or as two noncovalently associated fragments of 100 kDa each. Additional unidentified serine proteases cleave PTP µ in GBM cells to yield smaller extracellular fragments with MWs of 78 and 55 kDa (PMID: 25223585).

Storage

Storage:

Store at -20°C. Stable for one year after shipment.

Storage Buffer:

PBS with 0.02% sodium azide and 50% glycerol, pH7.3

Aliquoting is unnecessary for -20°C storage

For technical support and original validation data for this product please contact:

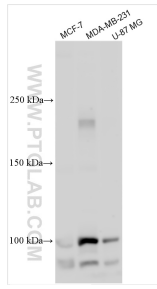
T: 4006900926

E: Proteintech-CN@ptglab.com

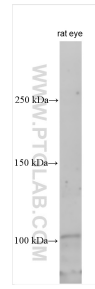
W: ptgcn.com

This product is exclusively available under Proteintech Group brand and is not available to purchase from any other manufacturer.

Selected Validation Data



Various lysates were subjected to SDS PAGE followed by western blot with 30763-1-AP (PTPRM antibody) at dilution of 1:1500 incubated at room temperature for 1.5 hours.



Various lysates were subjected to SDS PAGE followed by western blot with 30763-1-AP (PTPRM antibody) at dilution of 1:1500 incubated at room temperature for 1.5 hours.