

SHLD3 Polyclonal antibody

Catalog Number: 30735-1-AP

Basic Information

Catalog Number:

30735-1-AP

Size:

350 µg/ml

Source:

Rabbit

Isotype:

IgG

Immunogen Catalog Number:

AG32940

GenBank Accession Number:**GeneID (NCBI):**

112441434

UNIPROT ID:

Q6ZNX1

Full Name:

SHLD3

Calculated MW:

29 kDa

Observed MW:

28-70 kDa

Purification Method:

Antigen affinity purification

Recommended Dilutions:

WB 1:500-1:2000

Applications

Tested Applications:

WB, ELISA

Species Specificity:

Human, mouse

Positive Controls:

WB : HeLa cells, mouse ovary tissue

Background Information

SHLD3 (shieldin complex subunit 3), also known as RINN1 or CTC-534A2.2. It is located in Chromosome and expressed in monocyte. The gene is a component of the shieldin complex, which plays an important role in repair of DNA double-stranded breaks (DSBs). It has been found that the proper function of MAD2L2 in shieldin requires its dimerization, and the interaction between MAD2L2 and SHLD3 is mediated and accelerated by SHLD2. The dimerization defect MAD2L2 damages the assembly of shieldin and cannot promote the NHEJ. In addition, the dimerization of MAD2L2 and the existence of SHLD3 allow shieldin to interact with TRIP13 ATPase (PMID: 34521823). The calculated molecular weight of SHLD3 is 28 kDa, the antibody can recognize the 70kDa band, which may be related to the interaction between MAD2L2 and SHLD3 as a dimer in shieldin complex.

Storage

Storage:

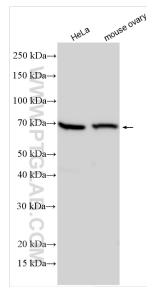
Store at -20°C. Stable for one year after shipment.

Storage Buffer:

PBS with 0.02% sodium azide and 50% glycerol pH 7.3.

Aliquoting is unnecessary for -20°C storage

Selected Validation Data



Various lysates were subjected to SDS PAGE followed by western blot with 30735-1-AP (SHLD3 antibody) at dilution of 1:1000 incubated at room temperature for 1.5 hours.