

For Research Use Only

Endoglin/CD105 Polyclonal antibody

Catalog Number: 30730-1-AP

Featured Product



Basic Information

Catalog Number:

30730-1-AP

Concentration:

550 ug/ml

Source:

Rabbit

Isotype:

IgG

Immunogen Catalog Number:

EG0587

GenBank Accession Number:

BC014271

GeneID (NCBI):

2022

UNIPROT ID:

P17813

Full Name:

endoglin

Calculated MW:

71 kDa

Observed MW:

80-90 kDa

Purification Method:

Antigen affinity purification

Recommended Dilutions:

WB 1:1000-1:4000

IHC 1:300-1:1200

IF-P 1:50-1:500

Applications

Tested Applications:

WB, IHC, IF-P, ELISA

Species Specificity:

human

Note-IHC: suggested antigen retrieval with TE buffer pH 9.0; (*) Alternatively, antigen retrieval may be performed with citrate buffer pH 6.0

Positive Controls:

WB: HUVEC cells, HeLa cells, human placenta tissue

IHC: human renal cell carcinoma tissue, human placenta tissue

IF-P: human placenta tissue,

Background Information

Endoglin (ENG, CD105) is a homodimeric cell membrane glycoprotein of 180 kDa, composed of disulfide-linked subunits of 90-95 kDa. Endoglin is a proliferation-associated and hypoxia-inducible protein mainly expressed on vascular endothelial cells. It acts as an accessory receptor for transforming growth factor beta (TGF- β) and is involved in vascular development and remodeling. The important role of Endoglin in angiogenesis and in tumor progression makes it an ideal target for antiangiogenic therapy and a good marker for tumor prognosis. (PMID: 1326540; 14528280; 21737653; 12773481)

Storage

Storage:

Store at -20°C. Stable for one year after shipment.

Storage Buffer:

PBS with 0.02% sodium azide and 50% glycerol, pH7.3

Aliquoting is unnecessary for -20°C storage

For technical support and original validation data for this product please contact:

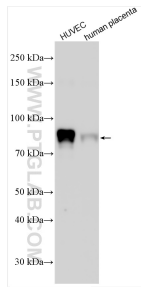
T: 4006900926

E: Proteintech-CN@ptglab.com

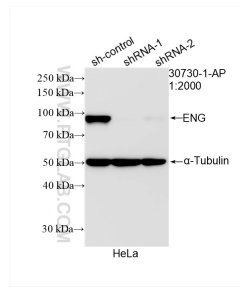
W: ptgcn.com

This product is exclusively available under Proteintech Group brand and is not available to purchase from any other manufacturer.

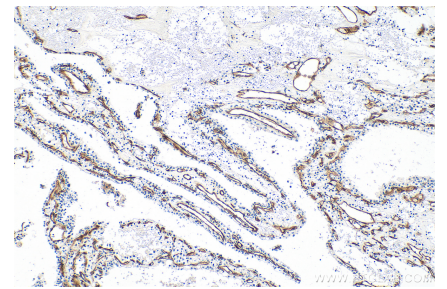
Selected Validation Data



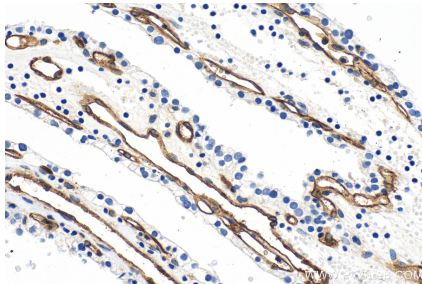
Various lysates were subjected to SDS PAGE followed by western blot with 30730-1-AP (Endoglin/CD105 antibody) at dilution of 1:2000 incubated at room temperature for 1.5 hours.



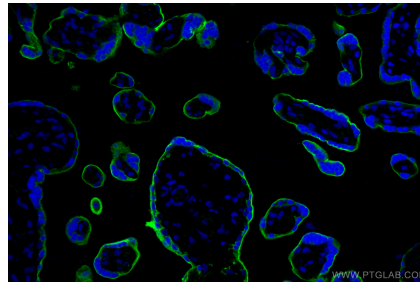
WB result of Endoglin/CD105 antibody (30730-1-AP; 1:2000; incubated at room temperature for 1.5 hours) with sh-Control and sh-Endoglin/CD105 transfected HeLa cells.



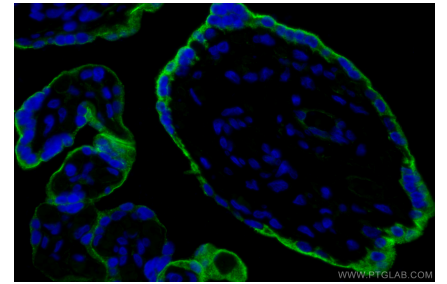
Immunohistochemical analysis of paraffin-embedded human renal cell carcinoma tissue slide using 30730-1-AP (Endoglin/CD105 antibody) at dilution of 1:600 (under 10x lens). Heat mediated antigen retrieval with Tris-EDTA buffer (pH 9.0).



Immunohistochemical analysis of paraffin-embedded human renal cell carcinoma tissue slide using 30730-1-AP (Endoglin/CD105 antibody) at dilution of 1:600 (under 40x lens). Heat mediated antigen retrieval with Tris-EDTA buffer (pH 9.0).



Immunofluorescent analysis of (4% PFA) fixed paraffin-embedded human placenta tissue using Endoglin/CD105 antibody (30730-1-AP) at dilution of 1:200 and Multi-rAb CoraLite® Plus 488-Goat Anti-Rabbit Recombinant Secondary Antibody (H+L) (RGAR002). Heat mediated antigen retrieval with Tris-EDTA buffer (pH 9.0).



Immunofluorescent analysis of (4% PFA) fixed paraffin-embedded human placenta tissue using Endoglin/CD105 antibody (30730-1-AP) at dilution of 1:200 and Multi-rAb CoraLite® Plus 488-Goat Anti-Rabbit Recombinant Secondary Antibody (H+L) (RGAR002). Heat mediated antigen retrieval with Tris-EDTA buffer (pH 9.0).