

For Research Use Only

LHX8 Polyclonal antibody, PBS Only

Catalog Number: 30722-1-PBS



Basic Information

Catalog Number:

30722-1-PBS

Size:

1 mg/ml

Source:

Rabbit

Isotype:

IgG

Immunogen Catalog Number:

AG33787

GenBank Accession Number:

BC040321

GeneID (NCBI):

431707

UNIPROT ID:

Q68G74

Full Name:

LIM homeobox 8

Calculated MW:

39 kDa

Observed MW:

39-44 kDa

Purification Method:

Antigen affinity purification

Applications

Tested Applications:

WB, IF/ICC, Indirect ELISA

Species Specificity:

human

Background Information

LHX8 (LIM homeobox 8), also known as LHX7. It is expected to be located in nucleus and mainly expressed in brain, lymphoid tissue, salivary gland. The calculated molecular weight of METAP1 is 39 kDa. The protein encoded by this gene is a member of the LIM homeobox family of proteins, which are involved in patterning and differentiation of various tissue types. These proteins contain two tandemly repeated cysteine-rich double-zinc finger motifs known as LIM domains, in addition to a DNA-binding homeodomain. It is also involved in oogenesis and in neuronal differentiation. LHX8 is a candidate gene for cleft palate, and it is also associated with odontoma formation (PMID: 34112263).

Storage

Storage:

Store at -80°C.

The product is shipped with ice packs. Upon receipt, store it immediately at -80°C

Storage Buffer:

PBS Only

For technical support and original validation data for this product please contact:

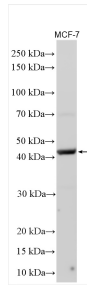
T: 4006900926

E: Proteintech-CN@ptglab.com

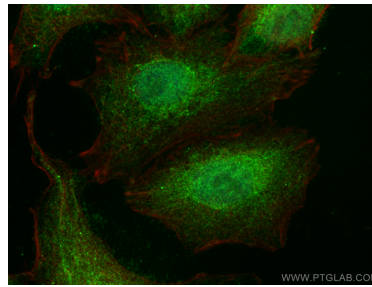
W: ptgcn.com

This product is exclusively available under Proteintech Group brand and is not available to purchase from any other manufacturer.

Selected Validation Data



Various lysates were subjected to SDS PAGE followed by western blot with 30722-1-AP (LHX8 antibody) at dilution of 1:2000 incubated at room temperature for 1.5 hours. This data was developed using the same antibody clone with 30722-1-PBS in a different storage buffer formulation.



Immunofluorescent analysis of (4% PFA) fixed A549 cells using LHX8 antibody (30722-1-AP) at dilution of 1:400 and CoraLite®488-Conjugated AffiniPure Goat Anti-Rabbit IgG(H+L) (SA00013-2), CL594-Phalloidin (red). This data was developed using the same antibody clone with 30722-1-PBS in a different storage buffer formulation.