

For Research Use Only

# Lipoprotein(a) Polyclonal antibody, PBS Only

Catalog Number:30675-1-PBS



## Basic Information

Catalog Number:

30675-1-PBS

Size:

1 mg/ml

Source:

Rabbit

Isotype:

IgG

Immunogen Catalog Number:

AG32907

GenBank Accession Number:

NM\_005577

GeneID (NCBI):

4018

UNIPROT ID:

P08519

Full Name:

lipoprotein, Lp(a)

Calculated MW:

501 kDa

Observed MW:

501 kDa

Purification Method:

Antigen affinity purification

## Applications

Tested Applications:

IHC, IF/ICC, Indirect ELISA

Species Specificity:

human

## Background Information

Lipoprotein(a), also known as Lp(a). The plasma concentration of human lipoprotein(a) is correlated with the risk of heart disease. A distinct feature of the Lp(a) particle is the apolipoprotein (a), which is associated with apoB-100, the main protein component of low-density lipoprotein. It is reported that apo(a), which has extensive homology to plasminogen, binds to immobilized fibronectin (PMID: 2531657). The binding of Lp(a) was localized to the C-terminal heparin-binding domain of fibronectin. It is enriched in liver tissue. The N-glycans are complex biantennary structures present in either a mono- or disialylated state.

## Storage

Storage:

Store at -80°C.

**The product is shipped with ice packs. Upon receipt, store it immediately at -80°C**

Storage Buffer:

PBS Only

For technical support and original validation data for this product please contact:

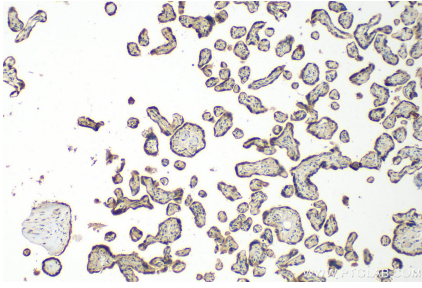
T: 4006900926

E: Proteintech-CN@ptglab.com

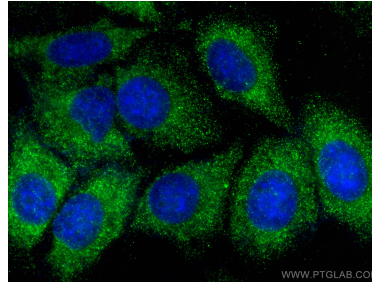
W: ptgcn.com

**This product is exclusively available under Proteintech Group brand and is not available to purchase from any other manufacturer.**

## Selected Validation Data



Immunohistochemical analysis of paraffin-embedded human placenta tissue slide using 30675-1-AP (Lipoprotein(a) antibody) at dilution of 1:200 (under 10x lens). Heat mediated antigen retrieval with Tris-EDTA buffer (pH 9.0). This data was developed using the same antibody clone with 30675-1-PBS in a different storage buffer formulation.



Immunofluorescent analysis of (-20°C Ethanol) fixed HepG2 cells using Lipoprotein(a) antibody (30675-1-AP) at dilution of 1:200 and CoraLite®488-Conjugated AffiniPure Goat Anti-Rabbit IgG(H+L). This data was developed using the same antibody clone with 30675-1-PBS in a different storage buffer formulation.