

For Research Use Only

# CTLA-4/CD152 Polyclonal antibody

Catalog Number: 30648-1-AP

1 Publications



## Basic Information

Catalog Number:

30648-1-AP

Size:

450 ug/ml

Source:

Rabbit

Isotype:

IgG

GenBank Accession Number:

NM\_009843.4

GeneID (NCBI):

12477

UNIPROT ID:

P09793

Full Name:

cytotoxic T-lymphocyte-associated protein 4

Calculated MW:

25 kDa

Observed MW:

28-40 kDa

Purification Method:

Antigen affinity purification

Recommended Dilutions:

WB 1:500-1:1000

IF-P 1:50-1:500

## Applications

Tested Applications:

WB, IF-P, ELISA

Cited Applications:

WB

Species Specificity:

mouse

Positive Controls:

WB : Con A treated mouse splenocytes,

IF-P : mouse spleen tissue,

## Background Information

CTLA-4, also known as CD152, belonging to the immunoglobulin superfamily, is primarily found on activated T cells and regulatory T cells (Tregs). CTLA-4 is closely related to the T-cell costimulatory CD28, and both molecules bind to B7-1 and B7-2 on antigen-presenting cells. CTLA-4 acts as a negative regulatory molecule of T-cell responses. Besides the full-length transmembrane form, CTLA-4 also exists in a truncated soluble form (sCTLA-4).

## Notable Publications

Author	Pubmed ID	Journal	Application
Wenjie Zhu	38703566	Int Immunopharmacol	WB

## Storage

Storage:

Store at -20°C. Stable for one year after shipment.

Storage Buffer:

PBS with 0.02% sodium azide and 50% glycerol pH 7.3.

Aliquoting is unnecessary for -20°C storage

For technical support and original validation data for this product please contact:

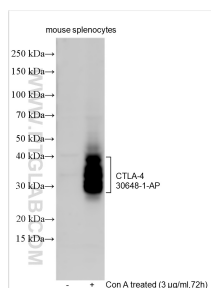
T: 4006900926

E: [Proteintech-CN@ptglab.com](mailto:Proteintech-CN@ptglab.com)

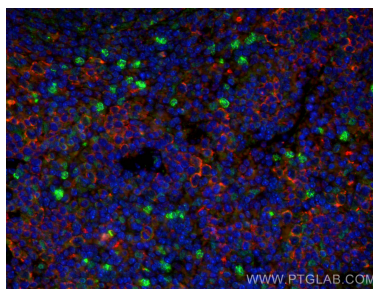
W: [ptgcn.com](http://ptgcn.com)

This product is exclusively available under Proteintech Group brand and is not available to purchase from any other manufacturer.

## Selected Validation Data



Untreated or Con A-treated (3 µg/ml, 72h) mouse splenocytes were subjected to SDS PAGE followed by western blot with 30648-1-AP (CTLA-4 antibody) at dilution of 1:500 incubated at room temperature for 1.5 hours.



Immunofluorescent analysis of (4% PFA) fixed mouse spleen tissue using CTLA-4 antibody (30648-1-AP) at dilution of 1:200 and CoraLite®488-Conjugated AffiniPure Goat Anti-Rabbit IgG(H+L), CoraLite®594 CD3 antibody (CL594-60181, Clone: 3F3A1, red).