

ZFP36L2 Polyclonal antibody

Catalog Number: 30640-1-AP

Basic Information

Catalog Number:

30640-1-AP

Size:

500 µg/ml

Source:

Rabbit

Isotype:

IgG

Immunogen Catalog Number:

AG32428

GenBank Accession Number:

BC005010

GeneID (NCBI):

678

UNIPROT ID:

P47974

Full Name:

zinc finger protein 36, C3H type-like 2

Calculated MW:

51 kDa

Observed MW:

54 kDa

Purification Method:

Antigen affinity purification

Recommended Dilutions:

WB 1:2000-1:12000

Applications

Tested Applications:

WB, ELISA

Species Specificity:

Human

Positive Controls:

WB : HL-60 cells,

Background Information

ZFP36L2 (Zinc finger protein 36 like 2) is an RNA-binding protein, belonging to the ZFP36 family, which regulates gene expression at the post-transcriptional level by binding and destabilizing certain AU-rich element (ARE) located in the 3' untranslated regions (3' UTRs) of mRNA (PMID: 29518627). Moreover, ZFP36L2 is a key protein that controls S-phase progression in the case of genome instability (PMID: 29449217).

Storage

Storage:

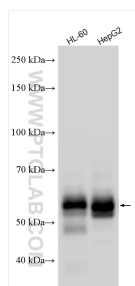
Store at -20°C. Stable for one year after shipment.

Storage Buffer:

PBS with 0.02% sodium azide and 50% glycerol pH 7.3.

Aliquoting is unnecessary for -20°C storage

Selected Validation Data



Various lysates were subjected to SDS PAGE followed by western blot with 30640-1-AP (ZFP36L2 antibody) at dilution of 1:6000 incubated at room temperature for 1.5 hours.