

For Research Use Only

MLPH Polyclonal antibody

Catalog Number: 30618-1-AP



Basic Information

Catalog Number:

30618-1-AP

Size:

450 µg/ml

Source:

Rabbit

Isotype:

IgG

Immunogen Catalog Number:

AG32931

GenBank Accession Number:

BC001653

GeneID (NCBI):

79083

UNIPROT ID:

Q9BV36

Full Name:

melanophilin

Calculated MW:

66 kDa

Observed MW:

66 kDa, 80 kDa

Purification Method:

Antigen affinity purification

Recommended Dilutions:

WB 1:5000-1:50000

Applications

Tested Applications:

WB, ELISA

Species Specificity:

Human

Positive Controls:

WB : A549 cells, HT-29 cells, LNCaP cells, MCF-7 cells, PC-3 cells

Background Information

Melanophilin (Mlph) is a member of the exophilin subfamily of Rab effector proteins. MLPH is a modular protein, forming a ternary complex with the small Ras-related GTPase Rab27A in its GTP-bound form and the motor protein myosin Va. It regulates retention of melanosomes at the peripheral actin cytoskeleton of melanocytes, a process essential for normal mammalian pigmentation. Defects in MLPH are a cause of Griscelli syndrome type 3 (GS3), which is characterized by a silver-gray hair color and abnormal pigment distribution in the hair shaft.

Storage

Storage:

Store at -20°C. Stable for one year after shipment.

Storage Buffer:

PBS with 0.02% sodium azide and 50% glycerol pH 7.3.

Aliquoting is unnecessary for -20°C storage

For technical support and original validation data for this product please contact:

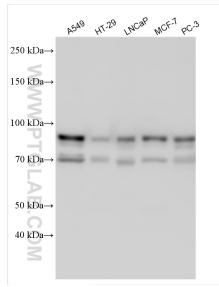
T: 4006900926

E: Proteintech-CN@ptglab.com

W: ptgcn.com

This product is exclusively available under Proteintech Group brand and is not available to purchase from any other manufacturer.

Selected Validation Data



Various lysates were subjected to SDS PAGE followed by western blot with 30618-1-AP (MLPH antibody) at dilution of 1:10000 incubated at room temperature for 1.5 hours.