

For Research Use Only

SIX6OS1 Polyclonal antibody

Catalog Number:30610-1-AP



Basic Information

Catalog Number:

30610-1-AP

Concentration:

500 µg/ml

Source:

Rabbit

Isotype:

IgG

Immunogen Catalog Number:

AG33548

GenBank Accession Number:

BC125070

GeneID (NCBI):

317761

UNIPROT ID:

Q8N1H7

Full Name:

chromosome 14 open reading frame

39

Calculated MW:

587 aa, 68 kDa

Observed MW:

70 kDa

Purification Method:

Antigen affinity purification

Recommended Dilutions:

WB: 1:1000-1:8000

Applications

Tested Applications:

WB, ELISA

Species Specificity:

human

Positive Controls:

WB : COLO 320 cells, Jurkat cells, SGC-7901 cells

Background Information

SIX6OS1 (SIX6 Opposite Strand 1) is a nuclear protein that plays a core role in the process of meiosis. It is a key scaffold protein that constitutes the central element of the synaptonemal complex, directly interacting with proteins such as SYCE1 to ensure the proper pairing, synapsis, and genetic recombination of homologous chromosomes. Its function is crucial for the formation of stable chiasmata, which are the basis for genetic diversity and the accurate segregation of chromosomes. Mutations in the SIX6OS1 gene can disrupt this process, leading to errors in chromosome separation and are one of the important genetic factors causing primary ovarian insufficiency in humans and non-obstructive azoospermia in males, directly associated with reproductive disorders.

Storage

Storage:

Store at -20°C. Stable for one year after shipment.

Storage Buffer:

PBS with 0.02% sodium azide and 50% glycerol, pH7.3

Aliquoting is unnecessary for -20°C storage

For technical support and original validation data for this product please contact:

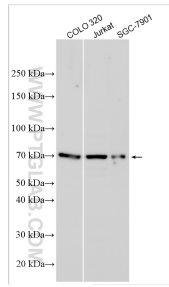
T: 4006900926

E: Proteintech-CN@ptglab.com

W: ptgcn.com

This product is exclusively available under Proteintech Group brand and is not available to purchase from any other manufacturer.

Selected Validation Data



Various lysates were subjected to SDS PAGE followed by western blot with 30610-1-AP (SIX6OS1 antibody) at dilution of 1:4000 incubated at room temperature for 1.5 hours.