

For Research Use Only

ZYG11A Polyclonal antibody

Catalog Number: 30597-1-AP



Basic Information

Catalog Number:

30597-1-AP

Size:

300 ug/ml

Source:

Rabbit

Isotype:

IgG

Immunogen Catalog Number:

AG30166

GenBank Accession Number:

NM_001004339

GeneID (NCBI):

440590

UNIPROT ID:

Q6WRX3

Full Name:

zyg-11 homolog A (C. elegans)

Calculated MW:

86 kDa

Observed MW:

48 kDa

Purification Method:

Antigen affinity purification

Recommended Dilutions:

WB 1:500-1:2000

Applications

Tested Applications:

WB, ELISA

Species Specificity:

human

Positive Controls:

WB : NCI-H1299 cells, HEK-293T cells, HeLa cells

Background Information

ZYG11A is a member of the Zyg11 protein family that functions as a target recruitment subunit of an E3 ubiquitin ligase complex playing a central role in the degradation of a regulatory protein involved in cell cycle regulation. ZYG11A is over-expressed in NSCLC tumor tissues and correlates with more aggressive clinical characteristics. Also ZYG11A gene constitutes a novel target for IGF1 action in endometrial cancer cells (PMID: 26771237, 31320996). This antibody is specific to isoform 2 of ZYG11A with a predicted molecular mass of 48 kDa.

Storage

Storage:

Store at -20°C. Stable for one year after shipment.

Storage Buffer:

PBS with 0.02% sodium azide and 50% glycerol pH 7.3.

Aliquoting is unnecessary for -20°C storage

For technical support and original validation data for this product please contact:

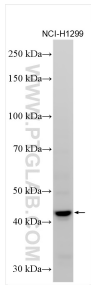
T: 4006900926

E: Proteintech-CN@ptglab.com

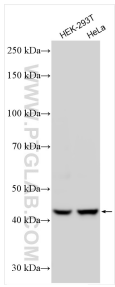
W: ptgcn.com

This product is exclusively available under Proteintech Group brand and is not available to purchase from any other manufacturer.

Selected Validation Data



Various lysates were subjected to SDS PAGE followed by western blot with 30597-1-AP (ZYG11A antibody) at dilution of 1:1000 incubated at room temperature for 1.5 hours.



Various lysates were subjected to SDS PAGE followed by western blot with 30597-1-AP (ZYG11A antibody) at dilution of 1:1000 incubated at room temperature for 1.5 hours.