

For Research Use Only

SYN1 Polyclonal antibody

Catalog Number: 30549-1-AP

1 Publications



Basic Information

Catalog Number:

30549-1-AP

Concentration:

750 ug/ml

Source:

Rabbit

Isotype:

IgG

Immunogen Catalog Number:

AG31091

GenBank Accession Number:

NM_006950

GeneID (NCBI):

6853

UNIPROT ID:

P17600

Full Name:

synapsin I

Calculated MW:

74 kDa

Observed MW:

70-80 kDa

Purification Method:

Antigen affinity purification

Recommended Dilutions:

WB: 1:5000-1:50000

IHC: 1:500-1:2000

Applications

Tested Applications:

WB, IHC, ELISA

Cited Applications:

WB

Species Specificity:

human, mouse

Cited Species:

human

Note-IHC: suggested antigen retrieval with TE buffer pH 9.0; (*) Alternatively, antigen retrieval may be performed with citrate buffer pH 6.0

Positive Controls:

WB : IMR-32 cells, SH-SY5Y cells, SK-N-SH cells

IHC : mouse pancreas tissue,

Background Information

SYN1, also named Synapsin I, Brain protein 4.1, belongs to the Synapsin family. SYN1 is a neuronal phosphoprotein that coats synaptic vesicles, binds to the cytoskeleton, and is believed to regulate neurotransmitter release. The complex formed with NOS1 and CAPON proteins is necessary for specific nitric-oxid functions at a presynaptic level. Defects in SYN1 are a cause of epilepsy X-linked with variable learning disabilities and behavior disorders (XELBD). Synapsin I (SYN1) is composed of two isoforms, synapsin Ia and Ib, with molecular weights of 74 kDa and 70 kDa, respectively.

Notable Publications

Author	Pubmed ID	Journal	Application
Yi Sun	40174476	Redox Biol	WB

Storage

Storage:

Store at -20°C. Stable for one year after shipment.

Storage Buffer:

PBS with 0.02% sodium azide and 50% glycerol, pH7.3

Aliquoting is unnecessary for -20°C storage

For technical support and original validation data for this product please contact:

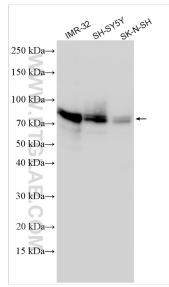
T: 4006900926

E: Proteintech-CN@ptglab.com

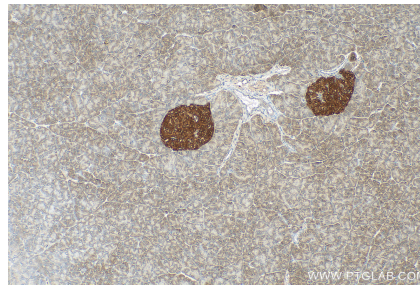
W: ptgcn.com

This product is exclusively available under Proteintech Group brand and is not available to purchase from any other manufacturer.

Selected Validation Data



Various lysates were subjected to SDS PAGE followed by western blot with 30549-1-AP (SYN1 antibody) at dilution of 1:10000 incubated at room temperature for 1.5 hours.



Immunohistochemical analysis of paraffin-embedded mouse pancreas tissue slide using 30549-1-AP (SYN1 antibody) at dilution of 1:1000 (under 10x lens). Heat mediated antigen retrieval with Tris-EDTA buffer (pH 9.0).