

For Research Use Only

# ALAS2 Polyclonal antibody, PBS Only

Catalog Number: 30539-1-PBS



## Basic Information

<b>Catalog Number:</b> 30539-1-PBS	<b>GenBank Accession Number:</b> BC030230	<b>Purification Method:</b> Antigen affinity purification
<b>Concentration:</b> 1 mg/ml	<b>GeneID (NCBI):</b> 212	
<b>Source:</b> Rabbit	<b>UNIPROT ID:</b> P22557	
<b>Isotype:</b> IgG	<b>Full Name:</b> aminolevulinate, delta-, synthase 2	
<b>Immunogen Catalog Number:</b> AG30308	<b>Calculated MW:</b> 587 aa, 65 kDa	
	<b>Observed MW:</b> 65 kDa	

## Applications

**Tested Applications:**  
WB, IF/ICC, Indirect ELISA

**Species Specificity:**  
human, mouse

## Background Information

The heme biosynthetic pathway begins from delta aminolevulinic acid synthase (ALAS) catalyzing the condensation of glycine and succinyl-CoA to delta aminolevulinic acid (ALA) in the mitochondria. ALAS is coded by two genes: ALAS1 and ALAS2. ALAS1 is ubiquitously expressed in all cells, and the negative feedback is regulated by the heme pool; however, ALAS2 is specifically expressed only in erythroid cells.

## Storage

**Storage:**  
Store at -80°C.  
**The product is shipped with ice packs. Upon receipt, store it immediately at -80°C**

**Storage Buffer:**  
PBS Only

For technical support and original validation data for this product please contact:

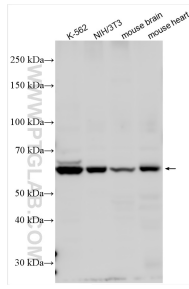
T: 4006900926

E: [Proteintech-CN@ptglab.com](mailto:Proteintech-CN@ptglab.com)

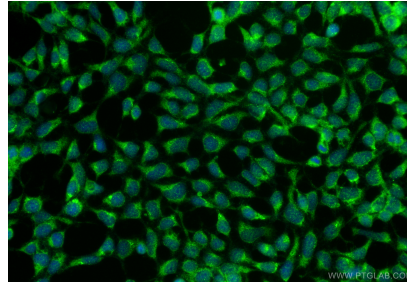
W: [ptgcn.com](http://ptgcn.com)

**This product is exclusively available under Proteintech Group brand and is not available to purchase from any other manufacturer.**

## Selected Validation Data



Various lysates were subjected to SDS PAGE followed by western blot with 30539-1-AP (ALAS2 antibody) at dilution of 1:1500 incubated at room temperature for 1.5 hours. This data was developed using the same antibody clone with 30539-1-PBS in a different storage buffer formulation.



Immunofluorescent analysis of (-20°C Ethanol) fixed HEK-293 cells using ALAS2 antibody (30539-1-AP) at dilution of 1:200 and CoraLite® 488-Conjugated Goat Anti-Rabbit IgG(H+L) (SA00013-2). This data was developed using the same antibody clone with 30539-1-PBS in a different storage buffer formulation.