

For Research Use Only

Claudin 9 Polyclonal antibody

Catalog Number: 30520-1-AP



Basic Information

Catalog Number: 30520-1-AP	GenBank Accession Number: BC051870	Purification Method: Antigen affinity purification
Size: 700 ug/ml	GeneID (NCBI): 9080	Recommended Dilutions: WB 1:500-1:1000
Source: Rabbit	UNIPROT ID: O95484	IHC 1:50-1:500
Isotype: IgG	Full Name: claudin 9	IF/ICC 1:50-1:500
Immunogen Catalog Number: AG29607	Calculated MW: 217 aa, 23 kDa	
	Observed MW: 21 kDa	

Applications

Tested Applications: WB, IHC, IF/ICC, ELISA	Positive Controls:
Species Specificity: human	WB : HuH-7 cells,
Note-IHC: suggested antigen retrieval with TE buffer pH 9.0; (*) Alternatively, antigen retrieval may be performed with citrate buffer pH 6.0	IHC : human endometrial cancer tissue, human stomach cancer tissue
	IF/ICC : T-47D cells,

Background Information

Claudins are a family of proteins that are the most important components of the tight junctions, where they establish the paracellular barrier that controls the flow of molecules in the intercellular space between the cells of an epithelium. They are small (20-27kDa) proteins with very similar structure. They have four transmembrane domains, with the N-terminus and the C-terminus in the cytoplasm. This antibody is specifically against claudin 9.

Storage

Storage:
Store at -20°C. Stable for one year after shipment.
Storage Buffer:
PBS with 0.02% sodium azide and 50% glycerol pH 7.3.
Aliquoting is unnecessary for -20°C storage

For technical support and original validation data for this product please contact:

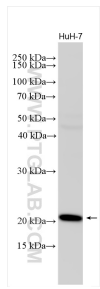
T: 4006900926

E: Proteintech-CN@ptglab.com

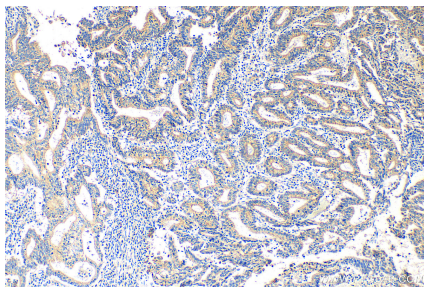
W: ptgcn.com

This product is exclusively available under Proteintech Group brand and is not available to purchase from any other manufacturer.

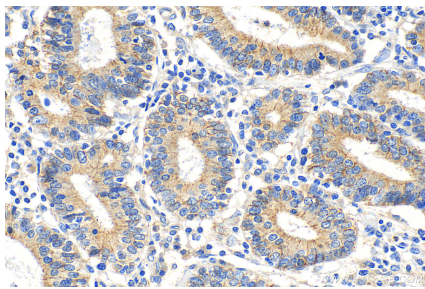
Selected Validation Data



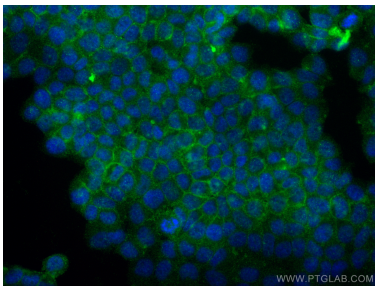
HuH-7 cells were subjected to SDS PAGE followed by western blot with 30520-1-AP (Claudin 9 antibody) at dilution of 1:500 incubated at room temperature for 1.5 hours.



Immunohistochemical analysis of paraffin-embedded human endometrial cancer tissue slide using 30520-1-AP (Claudin 9 antibody) at dilution of 1:200 (under 10x lens). Heat mediated antigen retrieval with Tris-EDTA buffer (pH 9.0).



Immunohistochemical analysis of paraffin-embedded human endometrial cancer tissue slide using 30520-1-AP (Claudin 9 antibody) at dilution of 1:200 (under 40x lens). Heat mediated antigen retrieval with Tris-EDTA buffer (pH 9.0).



Immunofluorescent analysis of (4% PFA) fixed T-47D cells using Claudin 9 antibody (30520-1-AP) at dilution of 1:200 and CoraLite® 488-Conjugated AffiniPure Goat Anti-Rabbit IgG(H+L) (SA00013-2).