

For Research Use Only

ATG12 Polyclonal antibody

Catalog Number: 30505-1-AP



Basic Information

Catalog Number:

30505-1-AP

Concentration:

300 ug/ml

Source:

Rabbit

Isotype:

IgG

Immunogen Catalog Number:

AG32268

GenBank Accession Number:

BC012266

GeneID (NCBI):

9140

UNIPROT ID:

O94817

Full Name:

ATG12 autophagy related 12 homolog
(S. cerevisiae)

Calculated MW:

15 kDa

Observed MW:

20 kDa, 50-60 kDa

Purification Method:

Antigen affinity purification

Recommended Dilutions:

WB 1:5000-1:50000

IF/ICC 1:50-1:500

Applications

Tested Applications:

WB, IF/ICC, ELISA

Species Specificity:

human, mouse

Positive Controls:

WB : HeLa cells, COLO 320 cells, NIH/3T3 cells, PC-3 cells

IF/ICC : PC-3 cells,

Background Information

ATG12, also named as APG12 and APG12L, belongs to the ATG12 family. It is required for autophagy. Free ATG12 is 15kd or 8kd. Conjugated to ATG5, ATG12-ATG5 show 48-55kd.

Storage

Storage:

Store at -20°C. Stable for one year after shipment.

Storage Buffer:

PBS with 0.02% sodium azide and 50% glycerol

Aliquoting is unnecessary for -20°C storage

For technical support and original validation data for this product please contact:

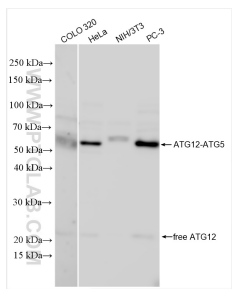
T: 4006900926

E: Proteintech-CN@ptglab.com

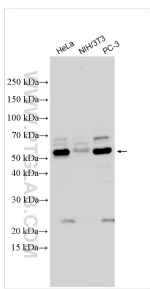
W: ptgcn.com

This product is exclusively available under Proteintech Group brand and is not available to purchase from any other manufacturer.

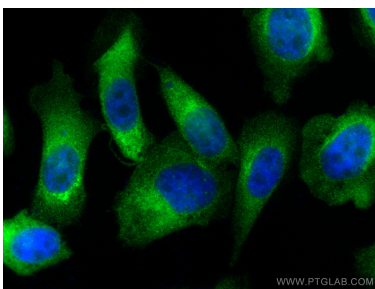
Selected Validation Data



Various lysates were subjected to SDS PAGE followed by western blot with 30505-1-AP (ATG12 antibody) at dilution of 1:2000 incubated at room temperature for 1.5 hours.



Various lysates were subjected to SDS PAGE followed by western blot with 30505-1-AP (ATG12 antibody) at dilution of 1:15000 incubated at room temperature for 1.5 hours.



Immunofluorescent analysis of (4% PFA) fixed PC-3 cells using ATG12 antibody (30505-1-AP) at dilution of 1:200 and CoraLite®488-Conjugated AffiniPure Goat Anti-Rabbit IgG(H+L).