

For Research Use Only

# SLC16A13 Polyclonal antibody

Catalog Number: 30466-1-AP



## Basic Information

<b>Catalog Number:</b> 30466-1-AP	<b>GenBank Accession Number:</b> BC142618	<b>Purification Method:</b> Antigen affinity purification
<b>Size:</b> 400 µg/ml	<b>GeneID (NCBI):</b> 201232	<b>Recommended Dilutions:</b> WB 1:500-1:2000 IHC 1:50-1:500
<b>Source:</b> Rabbit	<b>UNIPROT ID:</b> Q7RTYO	
<b>Isotype:</b> IgG	<b>Full Name:</b> solute carrier family 16, member 13 (monocarboxylic acid transporter 13)	
<b>Immunogen Catalog Number:</b> AG33183	<b>Calculated MW:</b> 426 aa, 45 kDa	
	<b>Observed MW:</b> 45-50 kDa	

## Applications

<b>Tested Applications:</b> IHC, WB, ELISA	<b>Positive Controls:</b>
<b>Species Specificity:</b> Human, mouse, rat	<b>WB:</b> mouse liver tissue, rat liver tissue
<b>Note-IHC:</b> suggested antigen retrieval with <b>TE buffer pH 9.0; (*) Alternatively, antigen retrieval may be performed with citrate buffer pH 6.0</b>	<b>IHC:</b> human pancreas cancer tissue,

## Background Information

SLC16A13 (solute carrier family 16 member 13), which encodes the monocarboxylate transporter 13 (MCT13), is a susceptibility gene for type 2 diabetes and is expressed in the liver and duodenum (PMID: 37630718). SLC16A13 is a potential target for the treatment of type 2 diabetes and non-alcoholic fatty liver disease (PMID: 34211098).

## Storage

**Storage:**  
Store at -20°C. Stable for one year after shipment.  
**Storage Buffer:**  
PBS with 0.02% sodium azide and 50% glycerol pH 7.3.  
Aliquoting is unnecessary for -20°C storage

For technical support and original validation data for this product please contact:

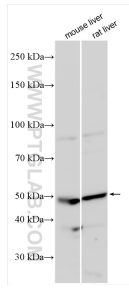
T: 4006900926

E: Proteintech-CN@ptglab.com

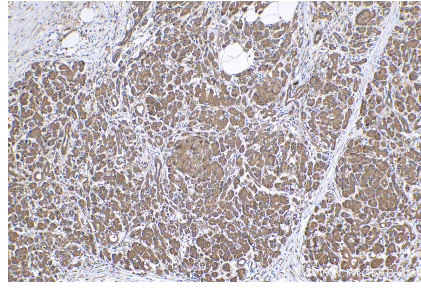
W: ptgcn.com

This product is exclusively available under Proteintech Group brand and is not available to purchase from any other manufacturer.

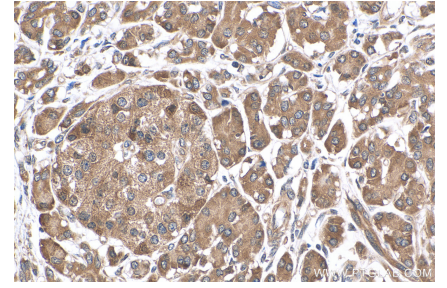
## Selected Validation Data



Various lysates were subjected to SDS PAGE followed by western blot with 30466-1-AP (SLC16A13 antibody) at dilution of 1:1000 incubated at room temperature for 1.5 hours.



Immunohistochemical analysis of paraffin-embedded human pancreas cancer tissue slide using 30466-1-AP (SLC16A13 antibody) at dilution of 1:200 (under 10x lens). Heat mediated antigen retrieval with Tris-EDTA buffer (pH 9.0).



Immunohistochemical analysis of paraffin-embedded human pancreas cancer tissue slide using 30466-1-AP (SLC16A13 antibody) at dilution of 1:200 (under 40x lens). Heat mediated antigen retrieval with Tris-EDTA buffer (pH 9.0).