

For Research Use Only

UTF1 Polyclonal antibody, PBS Only

Catalog Number: 30456-1-PBS



Basic Information

Catalog Number:

30456-1-PBS

Source:

Rabbit

Isotype:

IgG

Immunogen Catalog Number:

AG31070

GenBank Accession Number:

NM_003577

GeneID (NCBI):

8433

UNIPROT ID:

Q5T230

Full Name:

undifferentiated embryonic cell
transcription factor 1

Calculated MW:

36 kDa

Observed MW:

36 kDa

Purification Method:

Antigen affinity purification

Applications

Tested Applications:

WB, IHC, Indirect ELISA

Species Specificity:

human, rat

Background Information

UTF1 is a nuclear transcriptional co-regulator expressed in pluripotent stem cells, where it stabilizes self-renewal networks and controls the transition from pluripotency to differentiation. As a chromatin-associated factor, it fine-tunes gene expression programs essential for early embryogenesis and is a key marker in stem cell and cancer biology research.

Storage

Storage:

Store at -80°C.

The product is shipped with ice packs. Upon receipt, store it immediately at -80°C

Storage Buffer:

PBS only, pH7.3

For technical support and original validation data for this product please contact:

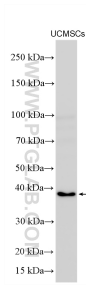
T: 4006900926

E: Proteintech-CN@ptglab.com

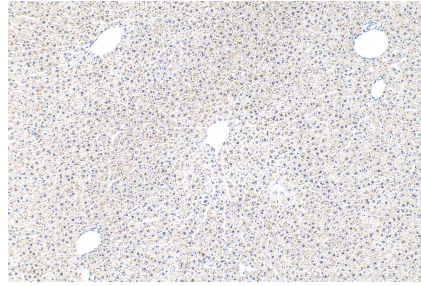
W: ptgcn.com

This product is exclusively available under Proteintech Group brand and is not available to purchase from any other manufacturer.

Selected Validation Data



UCMSCs cell lysates were subjected to SDS PAGE followed by western blot with 30456-1-AP (UTF1 antibody) at dilution of 1:1000 incubated at room temperature for 1.5 hours. This data was developed using the same antibody clone with 30456-1-PBS in a different storage buffer formulation.



Immunohistochemical analysis of paraffin-embedded rat liver tissue slide using 30456-1-AP (UTF1 antibody) at dilution of 1:200 (under 10x lens). Heat mediated antigen retrieval with Tris-EDTA buffer (pH 9.0). This data was developed using the same antibody clone with 30456-1-PBS in a different storage buffer formulation.