

For Research Use Only

CCR2 Polyclonal antibody

Catalog Number: 30420-1-AP



Basic Information

Catalog Number:

30420-1-AP

Size:

400 ug/ml

Source:

Rabbit

Isotype:

IgG

Immunogen Catalog Number:

AG33071

GenBank Accession Number:

BC074751

GeneID (NCBI):

729230

UNIPROT ID:

P41597

Full Name:

chemokine (C-C motif) receptor 2

Calculated MW:

374 aa, 42 kDa

Observed MW:

70 kDa

Purification Method:

Antigen affinity purification

Recommended Dilutions:

WB 1:500-1:1000

IF/ICC 1:50-1:500

Applications

Tested Applications:

WB, IF/ICC, ELISA

Species Specificity:

human

Positive Controls:

WB : HaCaT cells, K-562 cells, THP-1 cells

IF/ICC : THP-1 cells,

Background Information

CCR2 (C-C motif chemokine receptor-2), is a 42-kDa transmembrane protein highly expressed in bone marrow and lymph nodes (PMID: 16150057). It belongs to the G-protein-coupled seven-transmembrane receptor superfamily. CCR2 is the key functional receptor for MCP-1 (Monocyte chemoattractant protein-1) (PMID: 8146186). CCR2 and monocyte chemoattractant proteins (MCPs) play pivotal roles in the development of inflammatory responses and are crucial for the recruitment of immune cells to sites of inflammation. (PMID: 19441905). This antibody recognizes a homodimer consisting of its isoform1 and isoform2 (70 kDa).

Storage

Storage:

Store at -20°C. Stable for one year after shipment.

Storage Buffer:

PBS with 0.02% sodium azide and 50% glycerol pH 7.3.

Aliquoting is unnecessary for -20°C storage

For technical support and original validation data for this product please contact:

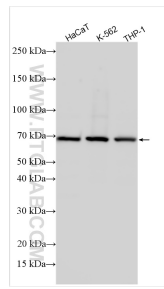
T: 4006900926

E: Proteintech-CN@ptglab.com

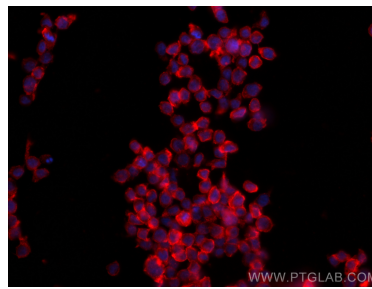
W: ptgcn.com

This product is exclusively available under Proteintech Group brand and is not available to purchase from any other manufacturer.

Selected Validation Data



Various lysates were subjected to SDS PAGE followed by western blot with 30420-1-AP (CCR2 antibody) at dilution of 1:500 incubated at room temperature for 1.5 hours.



Immunofluorescent analysis of (4% PFA) fixed THP-1 cells using CCR2 antibody (30420-1-AP) at dilution of 1:200 and CoraLite®594-Conjugated Goat Anti-Rabbit IgG(H+L) (SA00013-4).