

For Research Use Only

CHI3L1 Polyclonal antibody

Catalog Number: 30419-1-AP



Basic Information

Catalog Number:

30419-1-AP

Size:

400 µg/ml

Source:

Rabbit

Isotype:

IgG

Immunogen Catalog Number:

AG33123

GenBank Accession Number:

BC008568

GeneID (NCBI):

1116

UNIPROT ID:

P36222

Full Name:

chitinase 3-like 1 (cartilage glycoprotein-39)

Calculated MW:

383 aa, 43 kDa

Observed MW:

40-43 kDa

Purification Method:

Antigen affinity purification

Recommended Dilutions:

WB 1:500-1:3000

IF 1:200-1:800

Applications

Tested Applications:

IF-P, WB, ELISA

Species Specificity:

Human, mouse

Positive Controls:

WB : HT-29 cells, HepG2 cells

IF : mouse brain tissue,

Background Information

Storage

Storage:

Store at -20°C. Stable for one year after shipment.

Storage Buffer:

PBS with 0.02% sodium azide and 50% glycerol pH 7.3.

Aliquoting is unnecessary for -20°C storage

For technical support and original validation data for this product please contact:

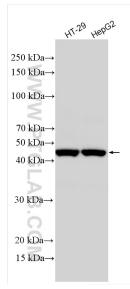
T: 4006900926

E: Proteintech-CN@ptglab.com

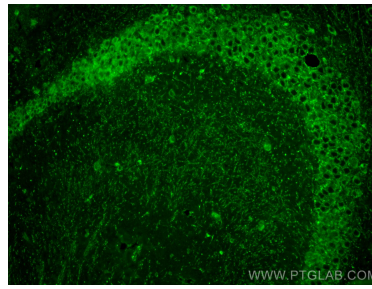
W: ptgcn.com

This product is exclusively available under Proteintech Group brand and is not available to purchase from any other manufacturer.

Selected Validation Data



Various lysates were subjected to SDS PAGE followed by western blot with 30419-1-AP (CHI3L1 antibody) at dilution of 1:1500 incubated at room temperature for 1.5 hours.



Immunofluorescent analysis of (4% PFA) fixed mouse brain tissue using CHI3L1 antibody (30419-1-AP) at dilution of 1:400 and CoraLite® 488-Conjugated AffiniPure Goat Anti-Rabbit IgG(H+L).