

For Research Use Only

# CCBL1 Polyclonal antibody

Catalog Number: 30296-1-AP



## Basic Information

Catalog Number:

30296-1-AP

Size:

500 µg/ml

Source:

Rabbit

Isotype:

IgG

Immunogen Catalog Number:

AG32316

GenBank Accession Number:

BC033685

GeneID (NCBI):

883

UNIPROT ID:

Q16773

Full Name:

cysteine conjugate-beta lyase,  
cytoplasmic

Observed MW:

48 kDa

Purification Method:

Antigen affinity purification

Recommended Dilutions:

WB 1:500-1:3000

IF 1:50-1:500

## Applications

Tested Applications:

IF-Fro, WB, ELISA

Species Specificity:

Human

Positive Controls:

WB : HEK-293 cells, HeLa cells, U-87 MG cells

IF : HeLa cells,

## Background Information

CCBL1 encodes kynurenine aminotransferase 1 (KAT1), a key enzyme involved in kynurenine pathway. CCBL1 catalyzes the production of kynurenic acid, a powerful endogenous excitatory amino acid receptor antagonist that is widely regarded as the potent neuroprotective agent.

## Storage

Storage:

Store at -20°C. Stable for one year after shipment.

Storage Buffer:

PBS with 0.02% sodium azide and 50% glycerol pH 7.3.

Aliquoting is unnecessary for -20°C storage

For technical support and original validation data for this product please contact:

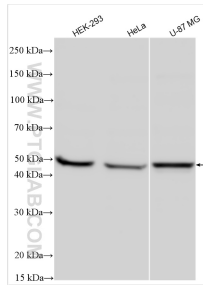
T: 4006900926

E: [Proteintech-CN@ptglab.com](mailto:Proteintech-CN@ptglab.com)

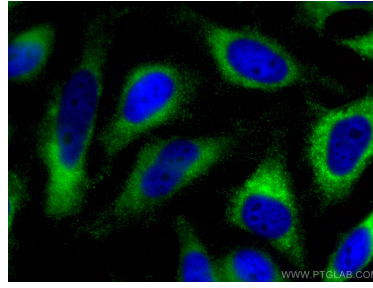
W: [ptgcn.com](http://ptgcn.com)

This product is exclusively available under Proteintech Group brand and is not available to purchase from any other manufacturer.

## Selected Validation Data



Various lysates were subjected to SDS PAGE followed by western blot with 30296-1-AP (CCBL1 antibody) at dilution of 1:1500 incubated at room temperature for 1.5 hours.



Immunofluorescent analysis of (-20°C Ethanol) fixed HeLa cells using CCBL1 antibody (30296-1-AP) at dilution of 1:200 and CoraLite® 488-Conjugated AffiniPure Goat Anti-Rabbit IgG(H+L).