

For Research Use Only

# CTRP1 Polyclonal antibody, PBS Only

Catalog Number:30289-1-PBS



## Basic Information

Catalog Number:

30289-1-PBS

Concentration:

1 mg/ml

Source:

Rabbit

Isotype:

IgG

Immunogen Catalog Number:

AG31779

GenBank Accession Number:

NM\_030968

GeneID (NCBI):

114897

UNIPROT ID:

Q9BXQ1

Full Name:

C1q and tumor necrosis factor related protein 1

Calculated MW:

32KD

Observed MW:

35 kDa

Purification Method:

Antigen affinity purification

## Applications

Tested Applications:

WB, IHC, Indirect ELISA

Species Specificity:

human, mouse

## Background Information

C1q and tumor necrosis factor related protein 1(CTRP1), also known as C1QTNF1, is a member of the CTRP superfamily. CTRP1 is a secreted glycoprotein synthesized by a variety of tissues and cells, such as adipose tissue and macrophages. CTRP1 is a paralog of adiponectin. CTRP1 plays a critical role in regulating inflammation and lipid metabolism and acts as a targeted treatment for atherosclerosis, heart failure, hypertension, NAFLD, and diabetes mellitus (PMID: 36812667).

## Storage

Storage:

Store at -80°C.

The product is shipped with ice packs. Upon receipt, store it immediately at -80°C

Storage Buffer:

PBS only

For technical support and original validation data for this product please contact:

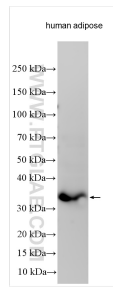
T: 4006900926

E: [Proteintech-CN@ptglab.com](mailto:Proteintech-CN@ptglab.com)

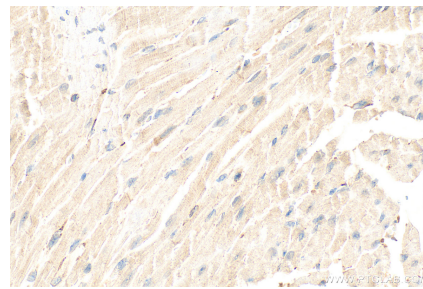
W: [ptgcn.com](http://ptgcn.com)

This product is exclusively available under Proteintech Group brand and is not available to purchase from any other manufacturer.

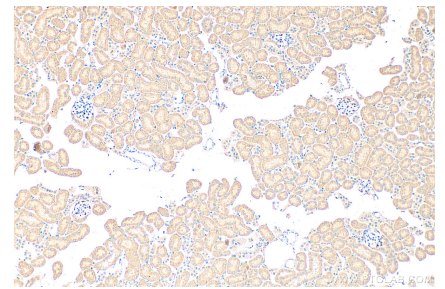
## Selected Validation Data



human adipose tissue was subjected to SDS PAGE followed by western blot with 30289-1-AP (CTRP1 antibody) at dilution of 1:1000 incubated at room temperature for 1.5 hours. This data was developed using the same antibody clone with 30289-1-PBS in a different storage buffer formulation.



Immunohistochemical analysis of paraffin-embedded mouse heart tissue slide using 30289-1-AP (CTRP1 antibody) at dilution of 1:400 (under 40x lens). Heat mediated antigen retrieval with Tris-EDTA buffer (pH 9.0). This data was developed using the same antibody clone with 30289-1-PBS in a different storage buffer formulation.



Immunohistochemical analysis of paraffin-embedded mouse kidney tissue slide using 30289-1-AP (CTRP1 antibody) at dilution of 1:400 (under 10x lens). Heat mediated antigen retrieval with Tris-EDTA buffer (pH 9.0). This data was developed using the same antibody clone with 30289-1-PBS in a different storage buffer formulation.