

For Research Use Only

SCML1 Polyclonal antibody

Catalog Number: 30257-1-AP

Featured Product



Basic Information

Catalog Number:

30257-1-AP

Size:

400 µg/ml

Source:

Rabbit

Isotype:

IgG

Immunogen Catalog Number:

AG33003

GenBank Accession Number:

BC026159

GeneID (NCBI):

6322

UNIPROT ID:

Q9UN30

Full Name:

sex comb on midleg-like 1
(Drosophila)

Calculated MW:

37 kDa

Observed MW:

42 kDa

Purification Method:

Antigen affinity purification

Recommended Dilutions:

WB 1:1000-1:8000

Applications

Tested Applications:

WB, ELISA

Species Specificity:

Human

Positive Controls:

WB : A549 cells, HepG2 cells

Background Information

Sex comb on midleg-like 1 (SCML1) is a meiosis-specific protein and is an essential component of the meiotic dense body. SCML1 is preferentially expressed in germ stem cells of testis, therefore likely involved in spermatogenesis.

Storage

Storage:

Store at -20°C. Stable for one year after shipment.

Storage Buffer:

PBS with 0.02% sodium azide and 50% glycerol pH 7.3.

Aliquoting is unnecessary for -20°C storage

For technical support and original validation data for this product please contact:

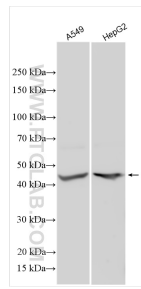
T: 4006900926

E: Proteintech-CN@ptglab.com

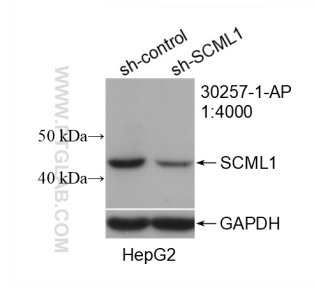
W: ptgcn.com

This product is exclusively available under Proteintech Group brand and is not available to purchase from any other manufacturer.

Selected Validation Data



Various lysates were subjected to SDS PAGE followed by western blot with 30257-1-AP (SCML1 antibody) at dilution of 1:4000 incubated at room temperature for 1.5 hours.



WB result of SCML1 antibody (30257-1-AP; 1:4000; incubated at room temperature for 1.5 hours) with sh-Control and sh-SCML1 transfected HepG2 cells.