

For Research Use Only

# CRTAC1 Polyclonal antibody, PBS Only

Catalog Number:30251-1-PBS



## Basic Information

Catalog Number:

30251-1-PBS

Source:

Rabbit

Isotype:

IgG

Immunogen Catalog Number:

AG32963

GenBank Accession Number:

BC034245

GeneID (NCBI):

55118

UNIPROT ID:

Q9NQ79

Full Name:

cartilage acidic protein 1

Calculated MW:

661 aa, 71 kDa

Observed MW:

71-100 kDa

Purification Method:

Antigen affinity purification

## Applications

Tested Applications:

WB, IHC, Indirect ELISA

Species Specificity:

human, mouse, rat

## Background Information

CRTAC1 (Cartilage acidic protein 1) is also named as ASPIC and 68 kDa chondrocyte-expressed protein (CEP-68). Cartilage acidic protein 1 (CRTAC1), a novel human marker which allowed discrimination of human chondrocytes from osteoblasts and mesenchymal stem cells (PMID: 17074475). CRTAC1 is a glycosylated calcium-binding extracellular matrix protein (PMID: 37796703). CRTAC1 acquired an alternate last exon from the tail-to-tail oriented neighbouring gene in humans resulting in the glycosylated isoform CRTAC1-A which represents a new extracellular matrix molecule of articular cartilage (PMID: 17074475). CRTAC1 was downregulated in bladder cancer tissues and cells (PMID: 34818994).

## Storage

Storage:

Store at -80°C.

**The product is shipped with ice packs. Upon receipt, store it immediately at -80°C**

Storage Buffer:

PBS only, pH7.3

For technical support and original validation data for this product please contact:

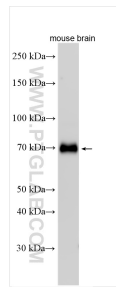
T: 4006900926

E: [Proteintech-CN@ptglab.com](mailto:Proteintech-CN@ptglab.com)

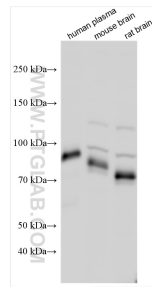
W: [ptgcn.com](http://ptgcn.com)

**This product is exclusively available under Proteintech Group brand and is not available to purchase from any other manufacturer.**

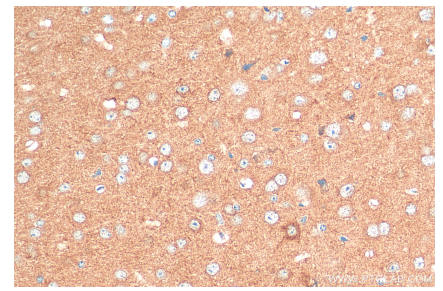
## Selected Validation Data



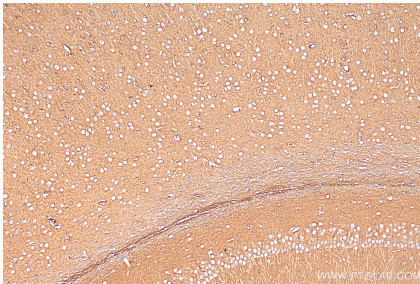
Various lysates were subjected to SDS PAGE followed by western blot with 30251-1-AP (CRTAC1 antibody) at dilution of 1:2000 incubated at room temperature for 1.5 hours. This data was developed using the same antibody clone with 30251-1-PBS in a different storage buffer formulation.



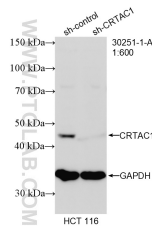
Various lysates were subjected to SDS PAGE followed by western blot with 30251-1-AP (CRTAC1 antibody) at dilution of 1:1500 incubated at room temperature for 1.5 hours. This data was developed using the same antibody clone with 30251-1-PBS in a different storage buffer formulation.



Immunohistochemical analysis of paraffin-embedded mouse brain tissue slide using 30251-1-AP (CRTAC1 antibody) at dilution of 1:200 (under 40x lens). Heat mediated antigen retrieval with Tris-EDTA buffer (pH 9.0). This data was developed using the same antibody clone with 30251-1-PBS in a different storage buffer formulation.



Immunohistochemical analysis of paraffin-embedded rat brain tissue slide using 30251-1-AP (CRTAC1 antibody) at dilution of 1:200 (under 10x lens). Heat mediated antigen retrieval with Tris-EDTA buffer (pH 9.0). This data was developed using the same antibody clone with 30251-1-PBS in a different storage buffer formulation.



WB result of CRTAC1 antibody (30251-1-AP; 1:600; incubated at room temperature for 1.5 hours) with sh-Control and sh-CRTAC1 transfected HCT 116 cells. This data was developed using the same antibody clone with 30251-1-PBS in a different storage buffer formulation.